

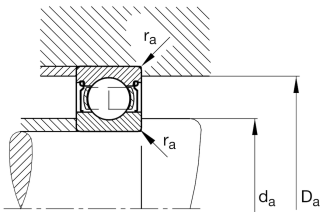
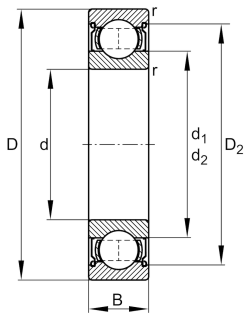
**FAG****6318-2Z**

Deep groove ball bearing

Deep groove ball bearing 63...-2Z, single row, shields, steel sheet metal cage

Schaeffler ID:
0167243050000

Technical information



Your current product variant

Sealing	2Z	Non-contact shield on both sides
Cage	JN	Steel sheet metal
Tolerance class	PN	Normal (PN)
Dimensional / heat stabilization	S0	Rings dimensional stabilized up to 150°
Lubricant	GA13	Ball bearing and insert bearing grease, standard for D>62mm
Radial internal clearance	CN (Group N)	Normal internal clearance
Bore type	Z	Cylindrical

Main Dimensions & Performance Data

d	90 mm	Bore diameter
D	190 mm	Outside diameter
B	43 mm	Width
C _r	142.000 N	Basic dynamic load rating, radial
C _{0r}	102.000 N	Basic static load rating, radial
C _{ur}	5.900 N	Fatigue load limit, radial
n _G	4.150 1/min	Limiting speed
n _{gr}	5.100 1/min	Reference speed
m	5,4 kg	Weight



Mounting dimensions

$d_{a \min}$	104 mm	Minimum diameter shaft shoulder
$D_{a \max}$	176 mm	Maximum diameter of housing shoulder
$r_{a \max}$	2,5 mm	Maximum fillet radius

Dimensions

r_{\min}	3 mm	Minimum chamfer dimension
D_1	157,18 mm	Shoulder diameter outer ring
D_2	160,74 mm	Caliber diameter outer ring
d_1	123,3 mm	Shoulder diameter inner ring

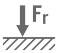
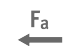




Temperature range

T_{\min}	-20 °C	Operating temperature min.
T_{\max}	120 °C	Operating temperature max.

Calculation factors

f_0	13,9	Calculation factor
-------	------	--------------------

Characteristics

	Radial load
	Axial load in one direction
	Axial load in two directions
	Lifetime lubrication, freedom from maintenance
	Grease Lubrication
	Sealed on both sides