



FAG

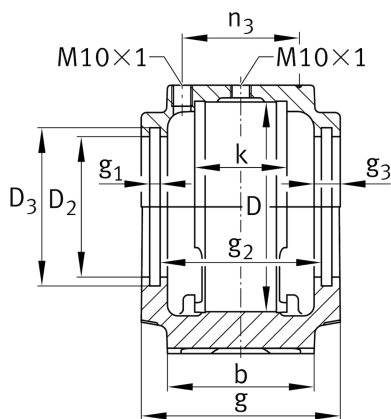
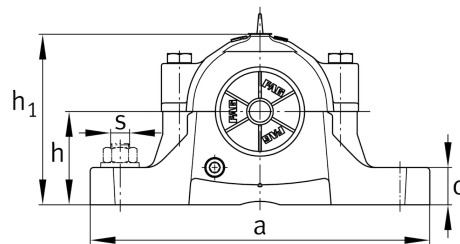
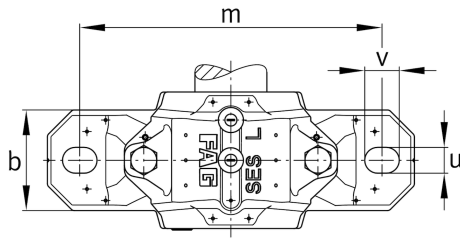
**SES515-612-L**

Plummer block housing

Schaeffler ID:  
0860885300000

Split plummer block housing for various bearing designs. The SNV series will be replaced by the new SES series in 2022.

## Technical information

**Main Dimensions & Performance Data**

D	130,00 mm	outside diameter bearing
a	280,00 mm	length base
h <sub>1</sub>	156,00 mm	height
g	115,00 mm	width housing body
K	56,00 mm	Width bearing seat
	7,00 kg	Weight

**Dimensions**

b	80,00 mm	width base
c	30,00 mm	height base
h	80,00 mm	center height
m	230,00 mm	distance fixing bore
s	0,62 inch	screw size
s	M16	size of fixing screws
u	18,00 mm	width slot
v	24,00 mm	length slot
D <sub>2</sub>	87,00 mm	diameter sealing
D <sub>3</sub>	95,50 mm	diameter sealing groove
D <sub>5</sub>	93,20 mm	Outside diameter sealing labyrinth
g <sub>1</sub>	5,00 mm	Width sealing groove
g <sub>2</sub>	97,00 mm	Distance sealing
g <sub>3</sub>	13,00 mm	Wall thickness
g <sub>4</sub>	28,00 mm	Distance oil lubrication
m <sub>1</sub>	194,00 mm	Distance holes aligned pins m1
n <sub>3</sub>	71,00 mm	Distance lubrication
n <sub>4</sub>	101,00 mm	Distance lubrication sealing
u <sub>1</sub>	8,00 mm	bore diameter u1
u <sub>2</sub>	14,00 mm	bore diameter u2