



FAG

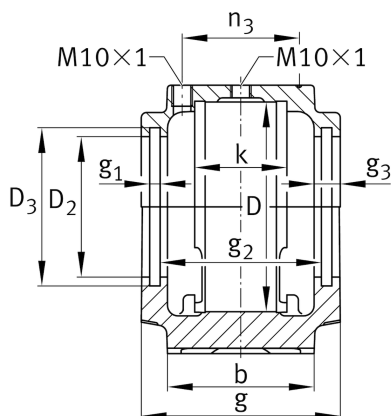
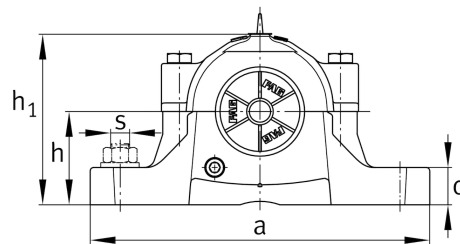
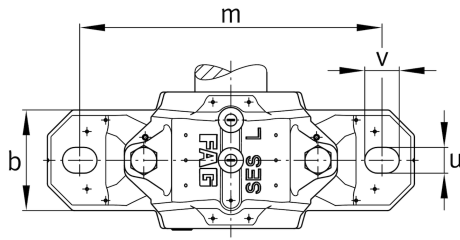
SES511-609-L

Plummer block housing

Schaeffler ID:
0857590150000

Split plummer block housing for various bearing designs. The SNV series will be replaced by the new SES series in 2022.

Technical information

**Main Dimensions & Performance Data**

D	100,00 mm	outside diameter bearing
a	255,00 mm	length base
h ₁	128,00 mm	height
g	95,00 mm	width housing body
K	44,00 mm	Width bearing seat
	4,42 kg	Weight

Dimensions

b	70,00 mm	width base
c	28,00 mm	height base
h	70,00 mm	center height
m	210,00 mm	distance fixing bore
s	0,62 inch	screw size
s	M16	size of fixing screws
u	18,00 mm	width slot
v	24,00 mm	length slot
D ₂	67,00 mm	diameter sealing
D ₃	75,50 mm	diameter sealing groove
D ₅	73,70 mm	Outside diameter sealing labyrinth
g ₁	5,00 mm	Width sealing groove
g ₂	77,00 mm	Distance sealing
g ₃	12,00 mm	Wall thickness
g ₄	34,00 mm	Distance oil lubrication
m ₁	174,00 mm	Distance holes aligned pins m1
n ₃	56,00 mm	Distance lubrication
n ₄	81,00 mm	Distance lubrication sealing
u ₁	6,00 mm	bore diameter u1
u ₂	14,00 mm	bore diameter u2