



PB25-XL

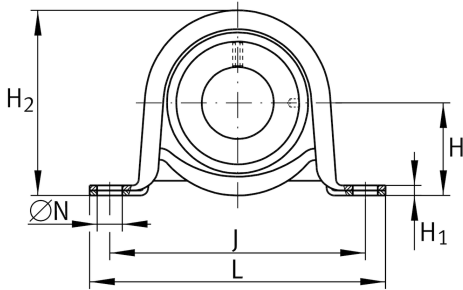
Plummer block housing unit

Schaeffler ID:
0008292180000

Plummer block housing units PB, sheet steel housing, radial insert ball bearing with eccentric locking collar, P seals

X-life

Technical information



Dimensions

H	28,6 mm	Distance shaft axis
A	31,8 mm	Width (base)
A ₁	23,5 mm	Width (head)
H ₁	4 mm	Height (base)
	0,315 kg	Weight

Main Dimensions & Performance Data

d	25 mm	Bore diameter
L	108 mm	Length total
H ₂	56,5 mm	Height
C _{0rG}	1.800 N	Load carrying capacity (housing)
C _r	14.000 N	Basic dynamic load rating, radial
C _{0r}	7.800 N	Basic static load rating, radial
n _{G Grease}	16.700 1/min	Limiting speed for grease lubrication

Mounting dimensions

J	86 mm	Distance fixing bore
N	11,5 mm	Fixing bore

Calculation factors

f ₀	13,8	Calculation factor
----------------	------	--------------------

Additional information

GEH52-BT	Housing
RAE25-XL-NPP-B	Bearing designation

