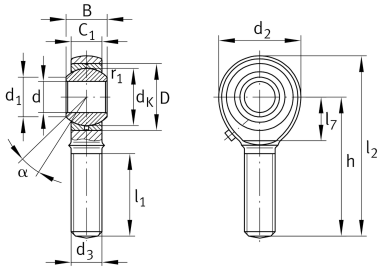


**GAKL16-PB** [↗](#)

## Rod end

Rod end with external thread, left hand thread, requiring maintenance, sliding contact surface: steel/bronze, DIN ISO 12240-4, dimension series K, type M, open design

## Technical information

**Main Dimensions & Performance Data**

d	16 mm	Bore diameter bearing
D	32 mm	Outside diameter bearing
B	21 mm	Width inner ring
C <sub>r</sub>	21.400 N	Basic dynamic load rating, radial
C <sub>0r</sub>	45.300 N	Basic static load rating, radial
≈m	208 g	Weight

**Mounting dimensions**

r <sub>1smin</sub>	0,3 mm	Edge Spacing
--------------------	--------	--------------

**Dimensions**

d <sub>K</sub>	28,575 mm	Ball diameter
d <sub>1</sub>	19,3 mm	Outer flange diameter inner ring
d <sub>2</sub>	42 mm	Outer eye diameter
d <sub>3</sub>	M16	Thread size
h	66 mm	Shank Length External thread rod
C <sub>1</sub>	15 mm	Width of the rod end
α	15 °	Tilt angle
l <sub>1</sub>	37 mm	Shank Length External thread head
l <sub>2</sub>	87 mm	Total length external thread head
l <sub>7</sub>	23 mm	Distance drilling with/shaft start
d <sub>OT</sub>	0,018 mm	Bore diameter bearing, upper tolerance
d <sub>UT</sub>	0 mm	Bore diameter bearing, lower tolerance
d <sub>T</sub>	H7	Bore diameter bearing, tolerance
B <sub>OT</sub>	0 mm	Width inner ring, upper tolerance
B <sub>UT</sub>	-0,12 mm	Width inner ring, lower tolerance
G <sub>r</sub>	0 - 0,035	Radial Clearance
G <sub>max</sub>	0,035 mm	Radial clearance, maximum
G <sub>min</sub>	0 mm	Radial clearance, minimum



[View product details on medias](#)

31.05.2024, 14:51:39 CEST

**SCHAEFFLER**

### Temperature range

T <sub>min</sub>	-60 °C	Operating temperature min.
T <sub>max</sub>	250 °C	Operating temperature max.