



Technical data

MUCFPL207

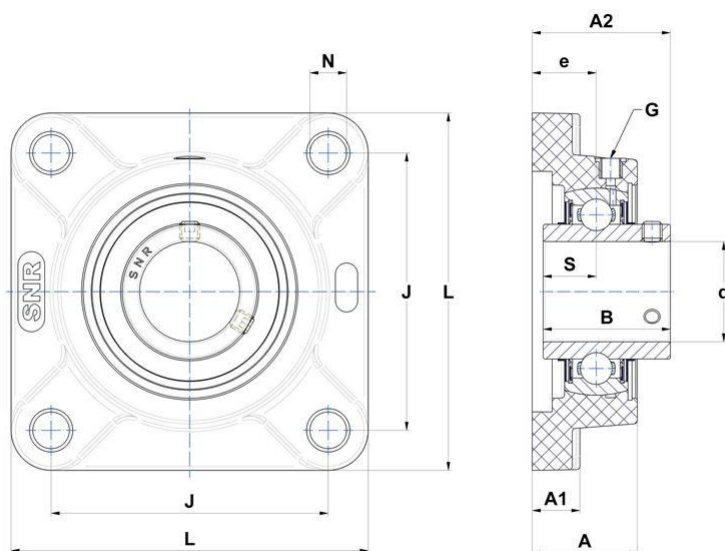
Bearing units

Thermoplastic housing stainless steel insert ball bearing with socket set screws, seal with slinger, food grease

KIT CONTENT

MUC207FD, FPL207

VISUAL (S)



OTHER FEATURES

| | |
|---|---------|
| Mass | 0,74 kg |
| Recommended tightening torque for set screw [Nm] | 8.3 N-m |

PRODUCT DIMENSIONS

| | |
|---|---------|
| Housing height (A) | 34,8 mm |
| Housing foot height / flange height (A1) | 15,5 mm |

PRODUCT DIMENSIONS

| | |
|--|---------|
| Total height (Housing + Insert) from mounting surface (A2) | 46,9 mm |
| Width of IR (B) | 42,9 mm |
| Shaft dia (d) | 35 mm |
| Distance mounting surface - bearing center (e) | 21,5 mm |
| Grease fitting (G) | 1/4"-28 |
| Mounting hole distance (J) | 92 mm |
| Housing width / dia (L) | 118 mm |
| Mounting hole dimension (N) | 13 mm |
| Dist. cent. of raceway to face IR on side opp. lock. device (S) | 17,5 mm |
| Brand | SNR |

PRODUCT PERFORMANCE

| | |
|-----------------------------------|---------|
| Dynamic load rating (C) | 22 kN |
| Static load rating (C0) | 12,3 kN |
| Operating temperature min. | -20 °C |
| Operating temperature max. | 100 °C |