



Technical data

MUCFPL206

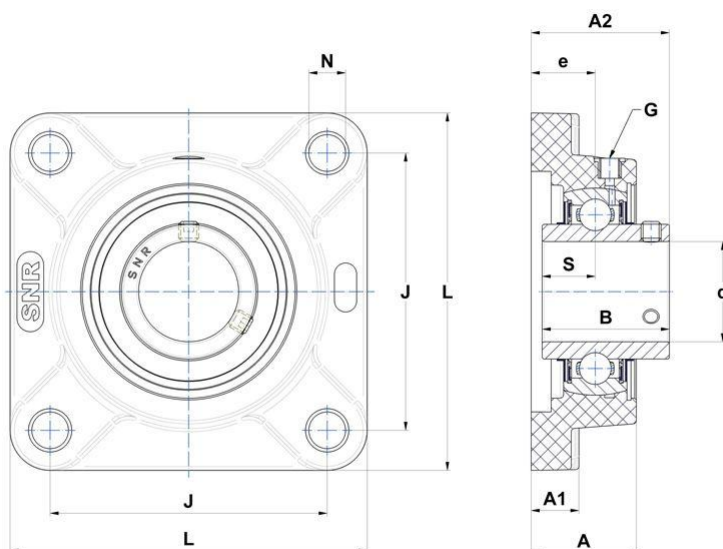
Bearing units

Thermoplastic housing stainless steel insert ball bearing with socket set screws, seal with slinger, food grease

KIT CONTENT

MUC206FD, FPL206

VISUAL (S)



PRODUCT DIMENSIONS

| | |
|--|---------|
| Housing height (A) | 31,5 mm |
| Housing foot height / flange height (A1) | 14,3 mm |
| Total height (Housing + Insert) from mouting surface (A2) | 41,4 mm |
| Width of IR (B) | 38,1 mm |
| Shaft dia (d) | 30 mm |

PRODUCT DIMENSIONS

| | |
|---|---------|
| Distance mounting surface - bearing center (e) | 19,2 mm |
| Grease fitting (G) | 1/4"-28 |
| Mounting hole distance (J) | 83 mm |
| Housing width / dia (L) | 107 mm |
| Mounting hole dimension (N) | 11 mm |
| Dist. cent. of raceway to face IR on side opp. lock. device (S) | 15,9 mm |
| Brand | SNR |

OTHER FEATURES

| | |
|--|---------|
| Mass | 0,5 kg |
| Recommended tightening torque for set screw [Nm] | 3.9 N-m |

PRODUCT PERFORMANCE

| | |
|----------------------------|---------|
| Dynamic load rating (C) | 16,7 kN |
| Static load rating (C0) | 9 kN |
| Operating temperature min. | -20 °C |
| Operating temperature max. | 100 °C |