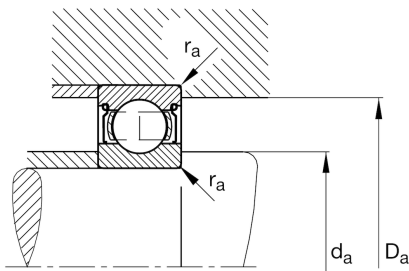
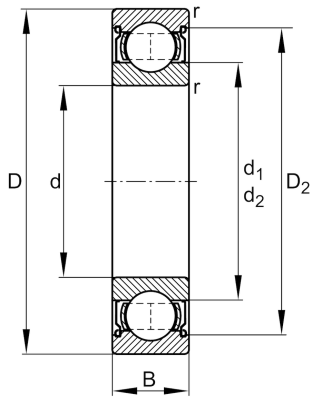


**FAG****688-2Z**

Deep groove ball bearing

Schaeffler ID:  
0554711450000Deep groove ball bearing 68..-2Z, single  
row, shields, steel sheet metal cage

## Technical information

**Main Dimensions & Performance Data**

d	8 mm	Bore diameter
D	16 mm	Outside diameter
B	5 mm	Width
$C_r$	1.260 N	Basic dynamic load rating, radial
$C_{0r}$	590 N	Basic static load rating, radial
$C_{ur}$	15,7 N	Fatigue load limit, radial
$n_G$	53.000 1/min	Limiting speed
$\approx m$	0,005 kg	Weight

**Mounting dimensions**

$d_{a \min}$	9,4 mm	Minimum diameter shaft shoulder
$D_{a \max}$	14,6 mm	Maximum diameter of housing shoulder
$r_{a \max}$	0,2 mm	Maximum fillet radius

**Dimensions**

$r_{\min}$	0,2 mm	Minimum chamfer dimension
$D_2$	14,2 mm	Caliber diameter outer ring
$d_2$	9,65 mm	Caliber diameter inner ring

**Temperature range**

$T_{\min}$	-30 °C	Operating temperature min.
$T_{\max}$	120 °C	Operating temperature max.

**Calculation factors**

$f_0$	14,8	Calculation factor
-------	------	--------------------