

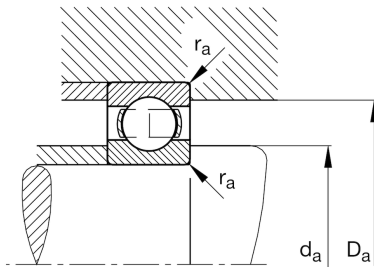
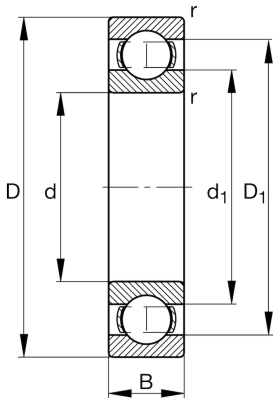
FAG

6418-M-C3

Deep groove ball bearing

Schaeffler ID:
0191127690030Deep groove ball bearing 64..-M, single
row, solid brass cage

Technical information

**Main Dimensions & Performance Data**

d	90 mm	Bore diameter
D	225 mm	Outside diameter
B	54 mm	Width
C_r	209.000 N	Basic dynamic load rating, radial
C_{0r}	162.000 N	Basic static load rating, radial
C_{ur}	9.100 N	Fatigue load limit, radial
n_G	5.200 1/min	Limiting speed
n_{gr}	4.950 1/min	Reference speed
	11,7 kg	{Weight}

Mounting dimensions

$d_{a \min}$	110 mm	Minimum diameter shaft shoulder
$D_{a \max}$	205 mm	Maximum diameter of housing shoulder
$r_{a \max}$	3 mm	Maximum fillet radius

Dimensions

r_{\min}	4 mm	Minimum chamfer dimension
D_1	184,14 mm	Shoulder diameter outer ring
d_1	132,1 mm	Shoulder diameter inner ring

Temperature range

T_{\min}	-30 °C	Operating temperature min.
T_{\max}	150 °C	Operating temperature max.

Calculation factors

f_0	12,1	Calculation factor
-------	------	--------------------