

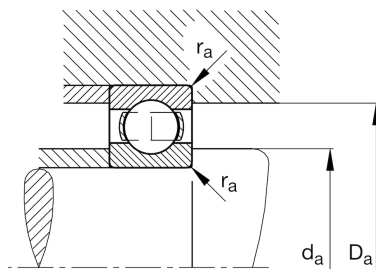
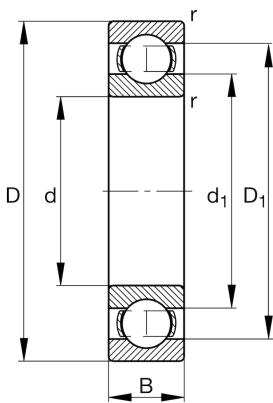
FAG

6319-M-J20AA

Deep groove ball bearing

Schaeffler ID:
0390158400000Deep groove ball bearing 63..-M-J20AA,
single row, solid brass cage, ceramic
coated

Technical information

**Main Dimensions & Performance Data**

d	95 mm	Bore diameter
D	200 mm	Outside diameter
B	45 mm	Width
r_{\min}	3 mm	Minimum chamfer dimension
C_r	154.000 N	Basic dynamic load rating, radial
C_{0r}	113.000 N	Basic static load rating, radial
C_{ur}	6.600 N	Fatigue load limit, radial
n_G	6.000 1/min	Limiting speed
n_{gr}	4.950 1/min	Reference speed
	6,9 kg	Weight

Dimensions

D_1	167,4 mm	Shoulder diameter outer ring
d_1	129,1 mm	Shoulder diameter inner ring

Mounting dimensions

$d_{a\min}$	109 mm	Minimum diameter shaft shoulder
$D_{a\max}$	186 mm	Maximum diameter of housing shoulder
$r_{a\max}$	2,5 mm	Maximum fillet radius

Calculation factors

f_0	13,8	Calculation factor
-------	------	--------------------

Temperature range

T_{\min}	-30 °C	Operating temperature min.
T_{\max}	150 °C	Operating temperature max.