

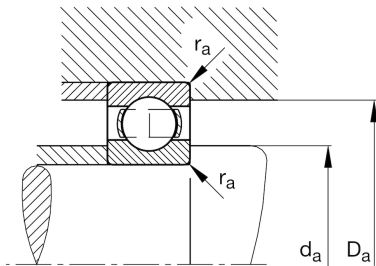
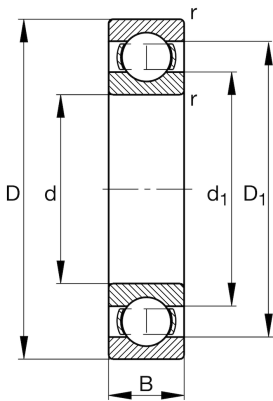
FAG

6316-M-J20AA

Deep groove ball bearing

Schaeffler ID:
0390155480000Deep groove ball bearing 63..-M-J20AA,
single row, solid brass cage, ceramic
coated

Technical information

**Temperature range**

T_{min}	-30 °C	Operating temperature min.
T_{max}	150 °C	Operating temperature max.
	4,441 kg	Weight

Main Dimensions & Performance Data

d	80 mm	Bore diameter
D	170 mm	Outside diameter
B	39 mm	Width
C_r	131.000 N	Basic dynamic load rating, radial
C_{0r}	87.000 N	Basic static load rating, radial
C_{ur}	5.400 N	Fatigue load limit, radial
n_G	7.000 1/min	Limiting speed
n_{gr}	5.500 1/min	Reference speed

Dimensions

r_{min}	2,1 mm	Minimum chamfer dimension
D_1	142,4 mm	Shoulder diameter outer ring
d_1	108,6 mm	Shoulder diameter inner ring

Mounting dimensions

$d_{a min}$	92 mm	Minimum diameter shaft shoulder
$D_{a max}$	158 mm	Maximum diameter of housing shoulder
$r_{a max}$	2,1 mm	Maximum fillet radius

Calculation factors

f_0	13,3	Calculation factor
-------	------	--------------------