

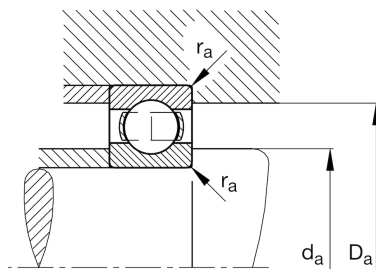
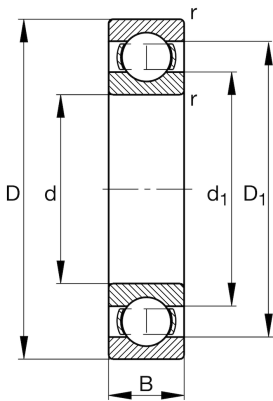
FAG

6314-M-J20AA-C3

Deep groove ball bearing

Schaeffler ID:
0390154400030Deep groove ball bearing 63..-M-J20AA,
single row, cf. DIN 625-1

Technical information

**Main Dimensions & Performance Data**

d	70 mm	Bore diameter
D	150 mm	Outside diameter
B	35 mm	Width
r_{\min}	2,1 mm	Minimum chamfer dimension
C_r	115.000 N	Basic dynamic load rating, radial
C_{0r}	69.000 N	Basic static load rating, radial
C_{ur}	4.600 N	Fatigue load limit, radial
n_G	8.800 1/min	Limiting speed
n_{gr}	6.100 1/min	Reference speed
	2,968 kg	Weight

Dimensions

D_1	126,8 mm	Shoulder diameter outer ring
d_1	95,1 mm	Shoulder diameter inner ring

Mounting dimensions

$d_{a\min}$	82 mm	Minimum diameter shaft shoulder
$D_{a\max}$	138 mm	Maximum diameter of housing shoulder
$r_{a\max}$	2,1 mm	Maximum fillet radius

Temperature range

T_{\min}	-30 °C	Operating temperature min.
T_{\max}	150 °C	Operating temperature max.

Calculation factors

f_0	13,4	Calculation factor
-------	------	--------------------