

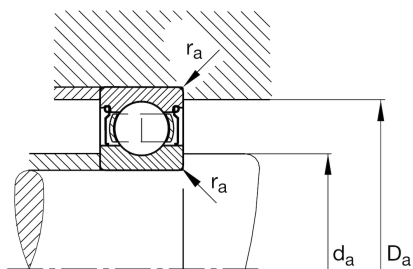
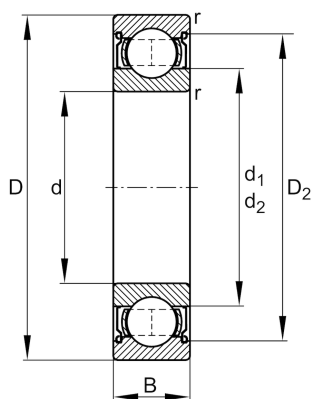
FAG

**6312-2Z**

Deep groove ball bearing

Schaeffler ID:  
0167238560000Deep groove ball bearing 63...-2Z, single  
row, shields, steel sheet metal cage

## Technical information

**Dimensions**

$r_{\min}$	2,1 mm	Minimum chamfer dimension
$D_2$	113,1 mm	Caliber diameter outer ring
$d_1$	81,3 mm	Shoulder diameter inner ring
	1,76 kg	Weight

**Main Dimensions & Performance Data**

$d$	60 mm	Bore diameter
$D$	130 mm	Outside diameter
$B$	31 mm	Width
$C_r$	89.000 N	Basic dynamic load rating, radial
$C_{0r}$	52.000 N	Basic static load rating, radial
$C_{ur}$	3.600 N	Fatigue load limit, radial
$n_G$	6.700 1/min	Limiting speed
$n_{gr}$	6.700 1/min	Reference speed

**Mounting dimensions**

$d_{a\min}$	72 mm	Minimum diameter shaft shoulder
$D_{a\max}$	118 mm	Maximum diameter of housing shoulder
$r_{a\max}$	2,1 mm	Maximum fillet radius

**Calculation factors**

$f_0$	13,2	Calculation factor
-------	------	--------------------

**Temperature range**

$T_{\min}$	-20 °C	Operating temperature min.
$T_{\max}$	120 °C	Operating temperature max.