**FAG**★ **6302-2Z**

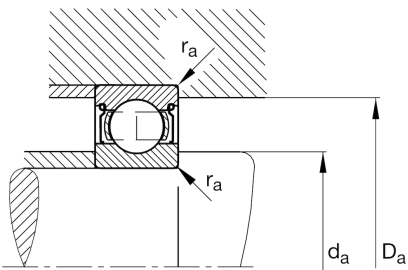
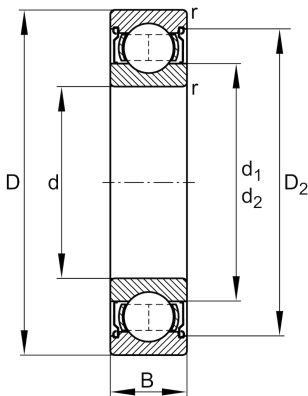
Deep groove ball bearing

Schaeffler ID:
0167227280000

Deep groove ball bearing 63...-2Z, single row, shields, steel sheet metal cage

★ Preferred product

Technical information

**Temperature range**

T_{min}	-20 °C	Operating temperature min.
T_{max}	120 °C	Operating temperature max.
	85,5 g	Weight

Main Dimensions & Performance Data

d	15 mm	Bore diameter
D	42 mm	Outside diameter
B	13 mm	Width
C_r	12.000 N	Basic dynamic load rating, radial
C_{0r}	5.300 N	Basic static load rating, radial
C_{ur}	360 N	Fatigue load limit, radial
n_G	21.400 1/min	Limiting speed
n_{gr}	17.500 1/min	Reference speed

Dimensions

r_{min}	1 mm	Minimum chamfer dimension
D_2	35 mm	Caliber diameter outer ring
d_1	23,6 mm	Shoulder diameter inner ring

Mounting dimensions

$d_{a min}$	20,6 mm	Minimum diameter shaft shoulder
$D_{a max}$	36,4 mm	Maximum diameter of housing shoulder
$r_{a max}$	1 mm	Maximum fillet radius

Calculation factors

f_0	12	Calculation factor
-------	----	--------------------