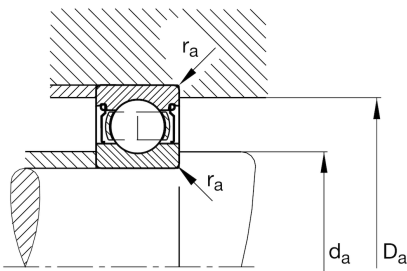
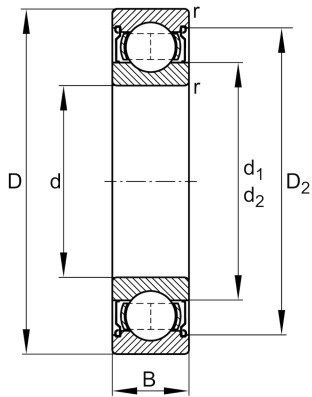


**FAG****627-2Z**

Deep groove ball bearing

Schaeffler ID:
0383910400000Deep groove ball bearing 62...-2Z, single
row, shields, steel sheet metal cage

Technical information

**Main Dimensions & Performance Data**

d	7 mm	Bore diameter
D	22 mm	Outside diameter
B	7 mm	Width
C_r	3.297 N	Basic dynamic load rating, radial
C_{0r}	1.368 N	Basic static load rating, radial
C_{ur}	74 N	Fatigue load limit, radial
n_G	40.000 1/min	Limiting speed
n_{gr}	28.000 1/min	Reference speed
$\approx m$	0,013 kg	Weight

Mounting dimensions

$d_{a \min}$	9,4 mm	Minimum diameter shaft shoulder
$D_{a \max}$	19,6 mm	Maximum diameter of housing shoulder
$r_{a \max}$	0,3 mm	Maximum fillet radius

Dimensions

r_{\min}	0,3 mm	Minimum chamfer dimension
D_2	19,03 mm	Caliber diameter outer ring
d_2	10,5 mm	Caliber diameter inner ring

Temperature range

T_{\min}	-30 °C	Operating temperature min.
T_{\max}	120 °C	Operating temperature max.

Calculation factors

f_0	12,4	Calculation factor
-------	------	--------------------