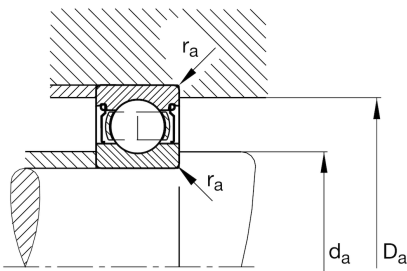
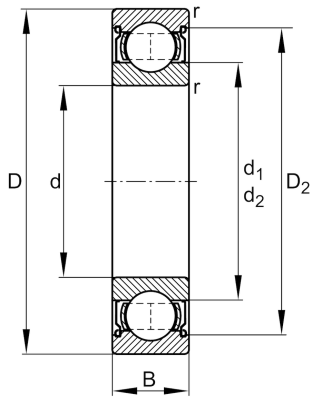


**FAG****626-2Z-HLN**

Deep groove ball bearing

Schaeffler ID:
0622519450000Deep groove ball bearing 62...-2Z, single
row, shields, steel sheet metal cage

Technical information

**Main Dimensions & Performance Data**

d	6 mm	Bore diameter
D	19 mm	Outside diameter
B	6 mm	Width
C_r	2.610 N	Basic dynamic load rating, radial
C_{0r}	1.050 N	Basic static load rating, radial
C_{ur}	65 N	Fatigue load limit, radial
n_G	44.500 1/min	Limiting speed
n_{gr}	30.500 1/min	Reference speed
	0,008 kg	Weight

Mounting dimensions

$d_{a \min}$	8,4 mm	Minimum diameter shaft shoulder
$D_{a \max}$	16,6 mm	Maximum diameter of housing shoulder
$r_{a \max}$	0,3 mm	Maximum fillet radius

Dimensions

r_{\min}	0,3 mm	Minimum chamfer dimension
D_2	16,5 mm	Caliber diameter outer ring
d_2	8,5 mm	Caliber diameter inner ring

Temperature range

T_{\min}	-30 °C	Operating temperature min.
T_{\max}	120 °C	Operating temperature max.

Calculation factors

f_0	122	Calculation factor
-------	-----	--------------------