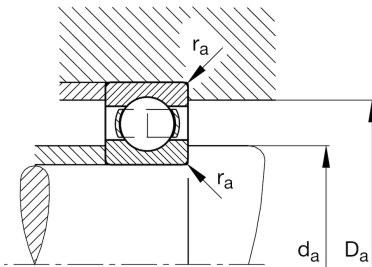
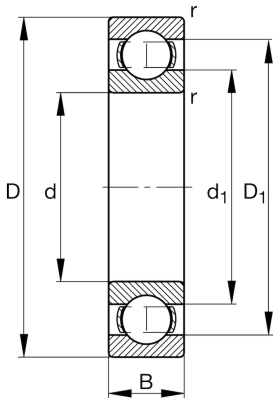
**FAG****6236-M-C3**

Deep groove ball bearing

Schaeffler ID:  
0191066370030Deep groove ball bearing 62...-M, single  
row, solid brass cage

## Technical information

**Main Dimensions & Performance Data**

d	180 mm	Bore diameter
D	320 mm	Outside diameter
B	52 mm	Width
$C_r$	240.000 N	Basic dynamic load rating, radial
$C_{0r}$	244.000 N	Basic static load rating, radial
$C_{ur}$	10.600 N	Fatigue load limit, radial
$n_G$	3.650 1/min	Limiting speed
$n_{gr}$	2.750 1/min	Reference speed
$\approx m$	18,77 kg	Weight

**Mounting dimensions**

$d_{a \min}$	197 mm	Minimum diameter shaft shoulder
$D_{a \max}$	303 mm	Maximum diameter of housing shoulder
$r_{a \max}$	3 mm	Maximum fillet radius

**Dimensions**

$r_{\min}$	4 mm	Minimum chamfer dimension
$D_1$	272,1 mm	Shoulder diameter outer ring
$d_1$	228,6 mm	Shoulder diameter inner ring

**Temperature range**

$T_{\min}$	-30 °C	Operating temperature min.
$T_{\max}$	200 °C	Operating temperature max.

**Calculation factors**

$f_0$	15,3	Calculation factor
-------	------	--------------------