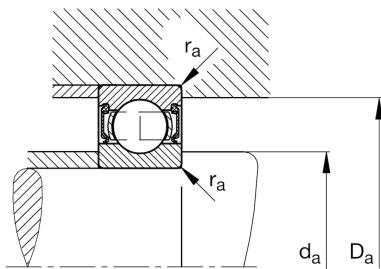
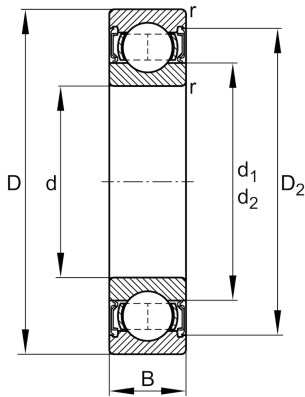


**FAG****62302-A-2RSR-C3**

Deep groove ball bearing

Schaeffler ID:
0596715050030Deep groove ball bearing 623..-A-2RSR,
single row, steel sheet metal cage

Technical information

**Main Dimensions & Performance Data**

d	15 mm	Bore diameter
D	42 mm	Outside diameter
B	17 mm	Width
C_r	11.330 N	Basic dynamic load rating, radial
C_{0r}	5.350 N	Basic static load rating, radial
C_{ur}	420 N	Fatigue load limit, radial
n_G	11.500 1/min	Limiting speed
	105 g	Weight

Mounting dimensions

$d_{a \min}$	20,6 mm	Minimum diameter shaft shoulder
$D_{a \max}$	36,4 mm	Maximum diameter of housing shoulder
$r_{a \max}$	1 mm	Maximum fillet radius

Dimensions

r_{\min}	1 mm	Minimum chamfer dimension
D_2	36,16 mm	Caliber diameter outer ring
d_1	23,2 mm	Shoulder diameter inner ring

Temperature range

T_{\min}	-20 °C	Operating temperature min.
T_{\max}	100 °C	Operating temperature max.

Calculation factors

f_0	12,1	Calculation factor
-------	------	--------------------