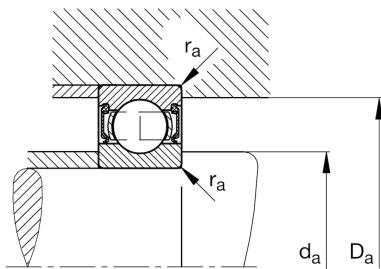
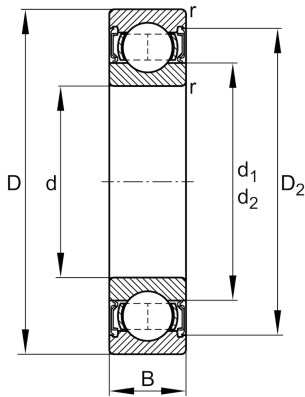


**FAG****62301-A-2RSR**

Deep groove ball bearing

Schaeffler ID:  
0647761230000Deep groove ball bearing 623..-A-2RSR,  
single row, steel sheet metal cage

## Technical information

**Main Dimensions & Performance Data**

d	12 mm	Bore diameter
D	37 mm	Outside diameter
B	17 mm	Width
$C_r$	9.710 N	Basic dynamic load rating, radial
$C_{0r}$	4.190 N	Basic static load rating, radial
$C_{ur}$	330 N	Fatigue load limit, radial
$n_G$	13.900 1/min	Limiting speed
	0,085 kg	Weight

**Mounting dimensions**

$d_{a \min}$	17,6 mm	Minimum diameter shaft shoulder
$D_{a \max}$	31,4 mm	Maximum diameter of housing shoulder
$r_{a \max}$	1 mm	Maximum fillet radius

**Dimensions**

$r_{\min}$	1 mm	Minimum chamfer dimension
$D_2$	32,6 mm	Caliber diameter outer ring
$d_1$	19,25 mm	Shoulder diameter inner ring

**Temperature range**

$T_{\min}$	-20 °C	Operating temperature min.
$T_{\max}$	100 °C	Operating temperature max.

**Calculation factors**

$f_0$	11,1	Calculation factor
-------	------	--------------------