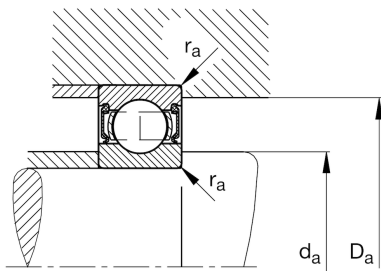
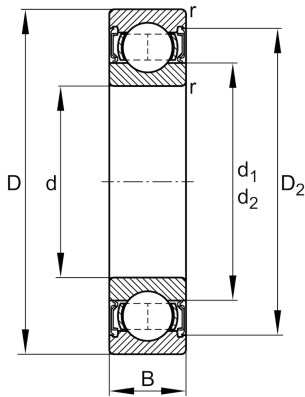


**FAG****6221-2RSR-C3**

Deep groove ball bearing

Schaeffler ID:
0794682680030Deep groove ball bearing 62...-2RSR,
single row, seals, steel sheet metal cage

Technical information

**Main Dimensions & Performance Data**

d	[105] mm	Bore diameter
D	[190] mm	Outside diameter
B	[36] mm	Width
C_r	[141.000] N	Basic dynamic load rating, radial
C_{0r}	[105.000] N	Basic static load rating, radial
C_{ur}	[5.800] N	Fatigue load limit, radial
n_G	[2.030] 1/min	Limiting speed
	[3,73] kg	Weight

Mounting dimensions

$d_{a \min}$	[117] mm	Minimum diameter shaft shoulder
$D_{a \max}$	[178] mm	Maximum diameter of housing shoulder
$r_{a \max}$	[2,1] mm	Maximum fillet radius

Dimensions

r_{\min}	[2,1] mm	Minimum chamfer dimension
D_2	[168,06] mm	Caliber diameter outer ring
d_1	[131,5] mm	Shoulder diameter inner ring

Temperature range

T_{\min}	[-20] °C	Operating temperature min.
T_{\max}	[100] °C	Operating temperature max.

Calculation factors

f_0	[14,4]	Calculation factor
-------	--------	--------------------