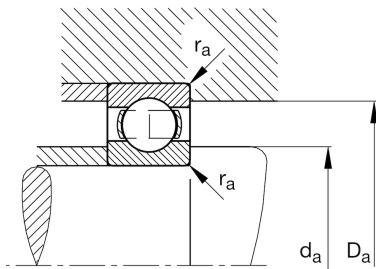
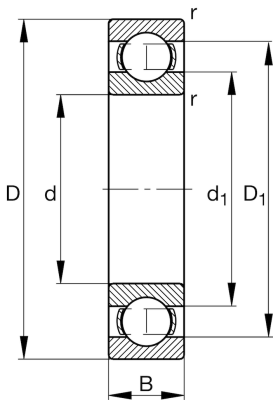


**FAG****6218**

Deep groove ball bearing

Schaeffler ID:
0167215000000Deep groove ball bearing 62, single row,
steel sheet metal cage

Technical information

**Main Dimensions & Performance Data**

d	90 mm	Bore diameter
D	160 mm	Outside diameter
B	30 mm	Width
C_r	102.000 N	Basic dynamic load rating, radial
C_{0r}	74.000 N	Basic static load rating, radial
C_{ur}	4.500 N	Fatigue load limit, radial
n_G	6.300 1/min	Limiting speed
n_{gr}	5.100 1/min	Reference speed
	2,189 kg	{Weight}

Mounting dimensions

$d_{a \min}$	101 mm	Minimum diameter shaft shoulder
$D_{a \max}$	149 mm	Maximum diameter of housing shoulder
$r_{a \max}$	2 mm	Maximum fillet radius

Dimensions

r_{\min}	2 mm	Minimum chamfer dimension
D_1	138,84 mm	Shoulder diameter outer ring
d_1	112,6 mm	Shoulder diameter inner ring

Temperature range

T_{\min}	-30 °C	Operating temperature min.
T_{\max}	150 °C	Operating temperature max.

Calculation factors

f_0	14,6	Calculation factor
-------	------	--------------------