

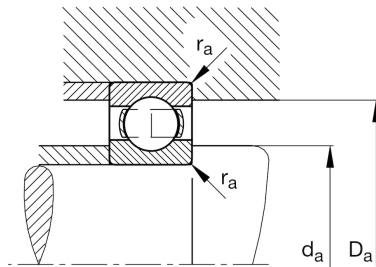
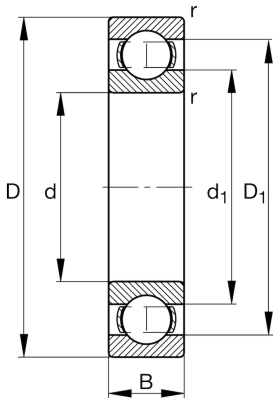
FAG

61952-MA-C3

Deep groove ball bearing

Schaeffler ID:
0190990370030Deep groove ball bearing 619..-MA, single
row, solid brass cage

Technical information

**Main Dimensions & Performance Data**

d	260 mm	Bore diameter
D	360 mm	Outside diameter
B	46 mm	Width
C_r	222.000 N	Basic dynamic load rating, radial
C_{0r}	280.000 N	Basic static load rating, radial
C_{ur}	8.800 N	Fatigue load limit, radial
n_G	3.050 1/min	Limiting speed
n_{gr}	2.180 1/min	Reference speed
	14,412 kg	Weight

Mounting dimensions

$d_{a \min}$	270,2 mm	Minimum diameter shaft shoulder
$D_{a \max}$	349,8 mm	Maximum diameter of housing shoulder
$r_{a \max}$	2,1 mm	Maximum fillet radius

Dimensions

r_{\min}	2,1 mm	Minimum chamfer dimension
D_1	330,9 mm	Shoulder diameter outer ring
d_1	291,15 mm	Shoulder diameter inner ring

Temperature range

T_{\min}	-30 °C	Operating temperature min.
T_{\max}	200 °C	Operating temperature max.

Calculation factors

f_0	16,3	Calculation factor
-------	------	--------------------