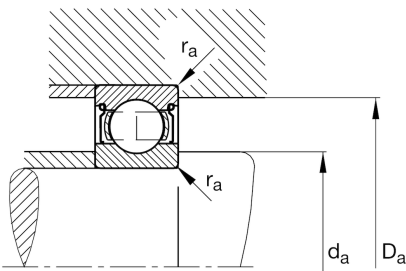
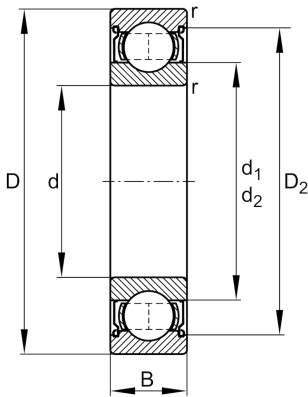


**FAG****61906-2Z-HLC-C3**

Deep groove ball bearing

Schaeffler ID:  
0554615730030Deep groove ball bearing 619..-2Z, single  
row, shields, steel sheet metal cage

## Technical information

**Main Dimensions & Performance Data**

d	30 mm	Bore diameter
D	47 mm	Outside diameter
B	9 mm	Width
$C_r$	7.240 N	Basic dynamic load rating, radial
$C_{0r}$	5.010 N	Basic static load rating, radial
$C_{ur}$	320 N	Fatigue load limit, radial
$n_G$	18.400 1/min	Limiting speed
$n_{gr}$	11.900 1/min	Reference speed
	53 g	{Weight}

**Mounting dimensions**

$d_{a \min}$	32 mm	Minimum diameter shaft shoulder
$D_{a \max}$	45 mm	Maximum diameter of housing shoulder
$r_{a \max}$	0,3 mm	Maximum fillet radius

**Dimensions**

$r_{\min}$	0,3 mm	Minimum chamfer dimension
$D_2$	44,1 mm	Caliber diameter outer ring
$d_1$	35,1 mm	Shoulder diameter inner ring

**Temperature range**

$T_{\min}$	-30 °C	Operating temperature min.
$T_{\max}$	120 °C	Operating temperature max.

**Calculation factors**

$f_0$	15,8	Calculation factor
-------	------	--------------------