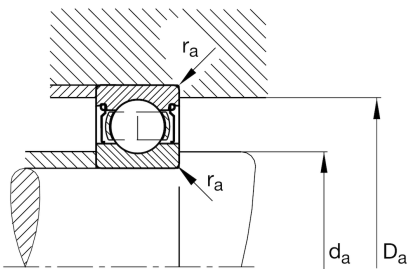
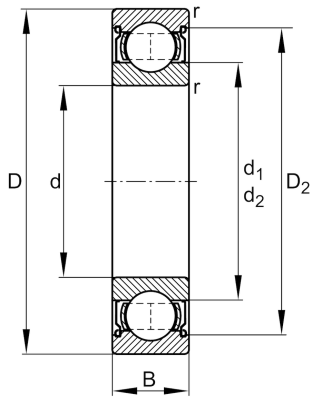


**FAG****61904-2Z**

Deep groove ball bearing

Schaeffler ID:
0554613010000Deep groove ball bearing 619..-2Z, single
row, shields, steel sheet metal cage

Technical information

**Main Dimensions & Performance Data**

d	20 mm	Bore diameter
D	37 mm	Outside diameter
B	9 mm	Width
C_r	6.380 N	Basic dynamic load rating, radial
C_{0r}	3.680 N	Basic static load rating, radial
C_{ur}	233 N	Fatigue load limit, radial
n_G	24.200 1/min	Limiting speed
n_{gr}	17.000 1/min	Reference speed
$\approx m$	37 g	Weight

Mounting dimensions

$d_{a \min}$	22 mm	Minimum diameter shaft shoulder
$D_{a \max}$	35 mm	Maximum diameter of housing shoulder
$r_{a \max}$	0,3 mm	Maximum fillet radius

Dimensions

r_{\min}	0,3 mm	Minimum chamfer dimension
D_2	33,5 mm	Caliber diameter outer ring
d_2	23,7 mm	Caliber diameter inner ring

Temperature range

T_{\min}	-30 °C	Operating temperature min.
T_{\max}	120 °C	Operating temperature max.

Calculation factors

f_0	14,8	Calculation factor
-------	------	--------------------