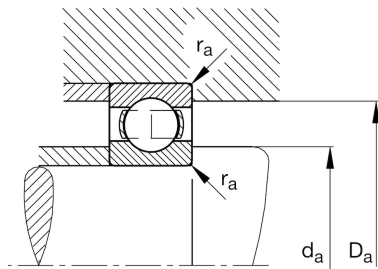
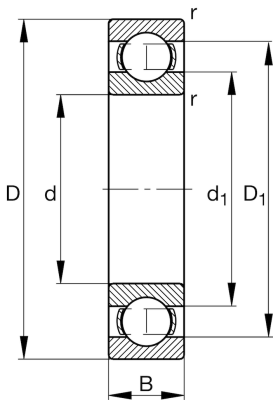


**FAG****61832**

Deep groove ball bearing

Schaeffler ID:  
0190974250000Deep groove ball bearing 618, single row,  
steel sheet metal cage

## Technical information



## Main Dimensions &amp; Performance Data

d	160 mm	Bore diameter
D	200 mm	Outside diameter
B	20 mm	Width
$C_r$	55.000 N	Basic dynamic load rating, radial
$C_{0r}$	62.000 N	Basic static load rating, radial
$C_{ur}$	2.500 N	Fatigue load limit, radial
$n_G$	4.450 1/min	Limiting speed
$n_{gr}$	3.000 1/min	Reference speed
	1,194 kg	{Weight}

## Mounting dimensions

$d_{a \min}$	166 mm	Minimum diameter shaft shoulder
$D_{a \max}$	194 mm	Maximum diameter of housing shoulder
$r_{a \max}$	1 mm	Maximum fillet radius

## Dimensions

$r_{\min}$	1,1 mm	Minimum chamfer dimension
$D_1$	187,32 mm	Shoulder diameter outer ring
$d_1$	172,7 mm	Shoulder diameter inner ring

## Temperature range

$T_{\min}$	-30 °C	Operating temperature min.
$T_{\max}$	150 °C	Operating temperature max.

## Calculation factors

$f_0$	15,9	Calculation factor
-------	------	--------------------