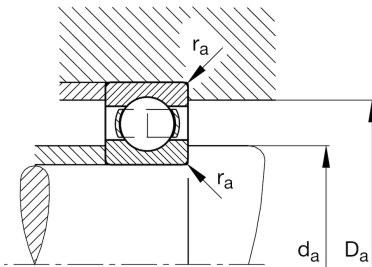
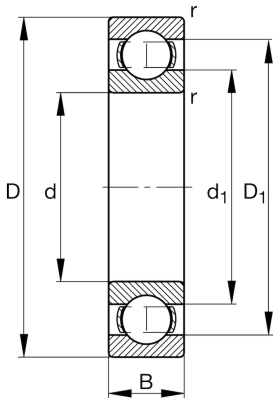
**FAG****61828-M**

Deep groove ball bearing

Schaeffler ID:
0190973600000Deep groove ball bearing 618..-M, single
row, solid brass cage

Technical information

**Main Dimensions & Performance Data**

d	140 mm	Bore diameter
D	175 mm	Outside diameter
B	18 mm	Width
C_r	38.500 N	Basic dynamic load rating, radial
C_{0r}	43.500 N	Basic static load rating, radial
C_{ur}	1.800 N	Fatigue load limit, radial
n_G	6.700 1/min	Limiting speed
n_{gr}	3.350 1/min	Reference speed
	1,01 kg	{Weight}

Mounting dimensions

$d_{a \min}$	146 mm	Minimum diameter shaft shoulder
$D_{a \max}$	169 mm	Maximum diameter of housing shoulder
$r_{a \max}$	1 mm	Maximum fillet radius

Dimensions

r_{\min}	1,1 mm	Minimum chamfer dimension
D_1	164,3 mm	Shoulder diameter outer ring
d_1	151,3 mm	Shoulder diameter inner ring

Temperature range

T_{\min}	-30 °C	Operating temperature min.
T_{\max}	150 °C	Operating temperature max.

Calculation factors

f_0	15,1	Calculation factor
-------	------	--------------------