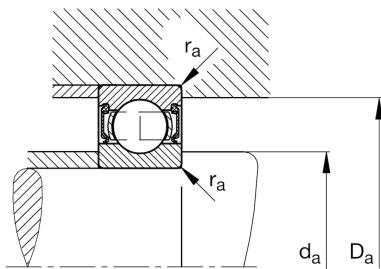
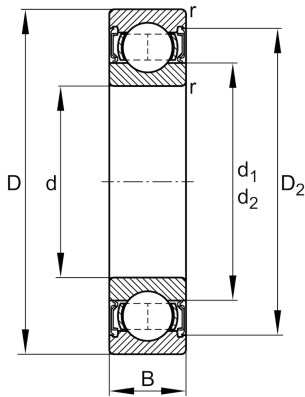


**FAG****61821-2RSR-Y**

Deep groove ball bearing

Schaeffler ID:
0807289440000Deep groove ball bearing 618..-2RSR-Y,
single row, seals, brass sheet metal cage

Technical information

**Main Dimensions & Performance Data**

d	105 mm	Bore diameter
D	130 mm	Outside diameter
B	13 mm	Width
C_r	22.100 N	Basic dynamic load rating, radial
C_{0r}	23.600 N	Basic static load rating, radial
C_{ur}	1.320 N	Fatigue load limit, radial
n_G	2.360 1/min	Limiting speed
	350 g	Weight

Mounting dimensions

$d_{a \min}$	109,6 mm	Minimum diameter shaft shoulder
$D_{a \max}$	125,4 mm	Maximum diameter of housing shoulder
$r_{a \max}$	1 mm	Maximum fillet radius

Dimensions

r_{\min}	1 mm	Minimum chamfer dimension
D_2	124,2 mm	Caliber diameter outer ring
d_1	113,2 mm	Shoulder diameter inner ring

Temperature range

T_{\min}	-20 °C	Operating temperature min.
T_{\max}	100 °C	Operating temperature max.

Calculation factors

f_0	15,9	Calculation factor
-------	------	--------------------