

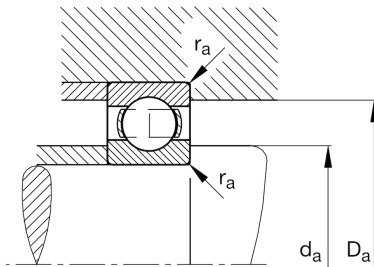
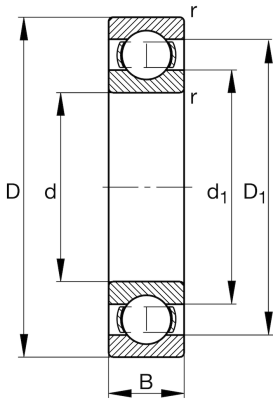
FAG

61814-Y

Deep groove ball bearing

Schaeffler ID:
0096196230000Deep groove ball bearing 618..-Y, single
row, brass sheet metal cage

Technical information

**Main Dimensions & Performance Data**

d	70 mm	Bore diameter
D	90 mm	Outside diameter
B	10 mm	Width
r_{\min}	0,6 mm	Minimum chamfer dimension
C_r	13.200 N	Basic dynamic load rating, radial
C_{0r}	12.400 N	Basic static load rating, radial
C_{ur}	820 N	Fatigue load limit, radial
n_G	13.800 1/min	Limiting speed
n_{gr}	5.300 1/min	Reference speed
	0,138 kg	Weight

Dimensions

D_1	83,6 mm	Shoulder diameter outer ring
d_1	76,6 mm	Shoulder diameter inner ring

Mounting dimensions

$d_{a \min}$	73,2 mm	Minimum diameter shaft shoulder
$D_{a \max}$	86,8 mm	Maximum diameter of housing shoulder
$r_{a \max}$	0,6 mm	Maximum fillet radius

Calculation factors

f_0	16,1	Calculation factor
-------	------	--------------------

Temperature range

T_{\min}	-30 °C	Operating temperature min.
T_{\max}	120 °C	Operating temperature max.