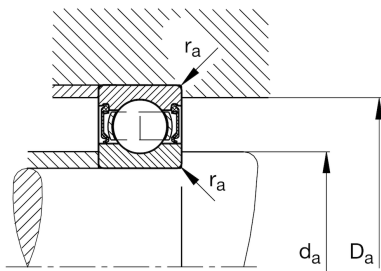
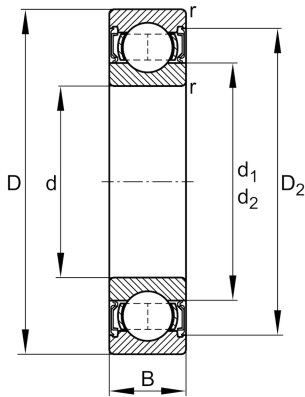


**FAG****61813-2RSR-Y**

Deep groove ball bearing

Schaeffler ID:
0787256660000Deep groove ball bearing 618..-2RSR-Y,
single row, seals, brass sheet metal cage

Technical information

**Main Dimensions & Performance Data**

d	65 mm	Bore diameter
D	85 mm	Outside diameter
B	10 mm	Width
C_r	13.000 N	Basic dynamic load rating, radial
C_{0r}	12.000 N	Basic static load rating, radial
C_{ur}	780 N	Fatigue load limit, radial
n_G	3.750 1/min	Limiting speed
	0,13 kg	Weight

Mounting dimensions

$d_{a \min}$	68,2 mm	Minimum diameter shaft shoulder
$D_{a \max}$	81,8 mm	Maximum diameter of housing shoulder
$r_{a \max}$	0,6 mm	Maximum fillet radius

Dimensions

r_{\min}	0,6 mm	Minimum chamfer dimension
D_2	80,5 mm	Caliber diameter outer ring
d_1	71,6 mm	Shoulder diameter inner ring

Temperature range

T_{\min}	-30 °C	Operating temperature min.
T_{\max}	100 °C	Operating temperature max.

Calculation factors

f_0	16,2	Calculation factor
-------	------	--------------------