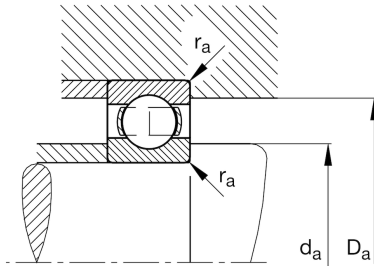
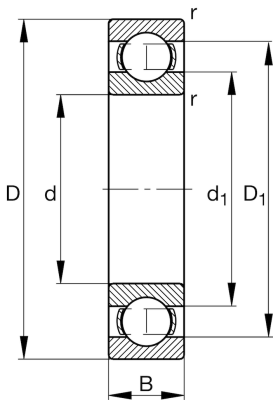


**FAG****61810-Y**

Deep groove ball bearing

Schaeffler ID:
0096194020000Deep groove ball bearing 618..-Y, single
row, brass sheet metal cage

Technical information

**Main Dimensions & Performance Data**

d	50 mm	Bore diameter
D	65 mm	Outside diameter
B	7 mm	Width
C_r	7.200 N	Basic dynamic load rating, radial
C_{0r}	6.300 N	Basic static load rating, radial
C_{ur}	440 N	Fatigue load limit, radial
n_G	19.700 1/min	Limiting speed
n_{gr}	6.400 1/min	Reference speed
	0,052 kg	{Weight}

Mounting dimensions

$d_{a \min}$	52 mm	Minimum diameter shaft shoulder
$D_{a \max}$	63 mm	Maximum diameter of housing shoulder
$r_{a \max}$	0,3 mm	Maximum fillet radius

Dimensions

r_{\min}	0,3 mm	Minimum chamfer dimension
D_1	59,9 mm	Shoulder diameter outer ring
d_1	55,1 mm	Shoulder diameter inner ring

Temperature range

T_{\min}	-30 °C	Operating temperature min.
T_{\max}	120 °C	Operating temperature max.

Calculation factors

f_0	16	Calculation factor
-------	----	--------------------