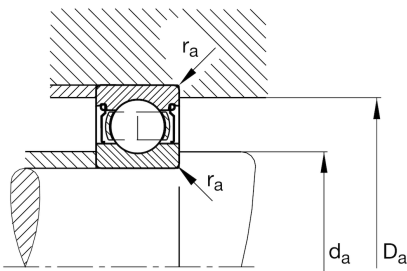
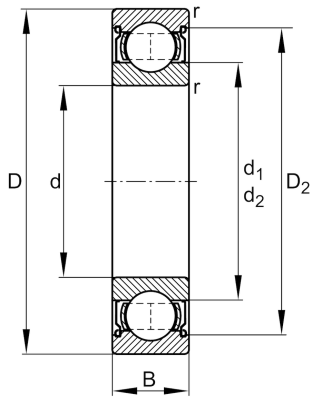


**FAG****609-2Z-HLN-C3**

Deep groove ball bearing

Schaeffler ID:  
0676206800030Deep groove ball bearing 60...-2Z, single  
row, shields, steel sheet metal cage

## Technical information

**Main Dimensions & Performance Data**

d	9 mm	Bore diameter
D	24 mm	Outside diameter
B	7 mm	Width
$C_r$	3.330 N	Basic dynamic load rating, radial
$C_{0r}$	1.410 N	Basic static load rating, radial
$C_{ur}$	88 N	Fatigue load limit, radial
$n_G$	38.500 1/min	Limiting speed
$n_{gr}$	30.000 1/min	Reference speed
	0,014 kg	Weight

**Mounting dimensions**

$d_{a \min}$	11 mm	Minimum diameter shaft shoulder
$D_{a \max}$	22 mm	Maximum diameter of housing shoulder
$r_{a \max}$	0,3 mm	Maximum fillet radius

**Dimensions**

$r_{\min}$	0,3 mm	Minimum chamfer dimension
$D_2$	20,48 mm	Caliber diameter outer ring
$d_2$	12,1 mm	Caliber diameter inner ring

**Temperature range**

$T_{\min}$	-30 °C	Operating temperature min.
$T_{\max}$	120 °C	Operating temperature max.

**Calculation factors**

$f_0$	128	Calculation factor
-------	-----	--------------------