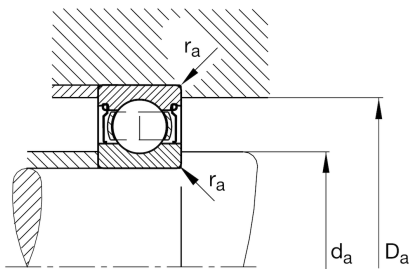
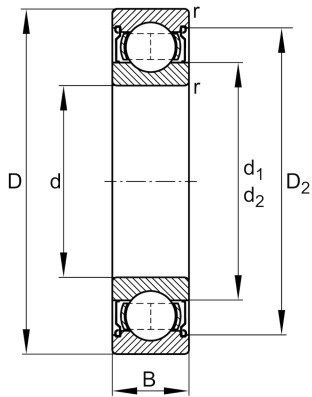


**FAG****605-2Z-HLC-C3**

Deep groove ball bearing

Schaeffler ID:  
0554330730030Deep groove ball bearing 60...-2Z, single  
row, shields, steel sheet metal cage

## Technical information

**Main Dimensions & Performance Data**

d	5 mm	Bore diameter
D	14 mm	Outside diameter
B	5 mm	Width
$C_r$	1.330 N	Basic dynamic load rating, radial
$C_{0r}$	507 N	Basic static load rating, radial
$C_{ur}$	13,8 N	Fatigue load limit, radial
$n_G$	58.000 1/min	Limiting speed
$n_{gr}$	45.000 1/min	Reference speed
	4 g	{Weight}

**Mounting dimensions**

$d_{a \min}$	6,4 mm	Minimum diameter shaft shoulder
$D_{a \max}$	12,6 mm	Maximum diameter of housing shoulder
$r_{a \max}$	0,2 mm	Maximum fillet radius

**Dimensions**

$r_{\min}$	0,2 mm	Minimum chamfer dimension
$D_2$	12,2 mm	Caliber diameter outer ring
$d_2$	6,9 mm	Caliber diameter inner ring

**Temperature range**

$T_{\min}$	-30 °C	Operating temperature min.
$T_{\max}$	120 °C	Operating temperature max.

**Calculation factors**

$f_0$	12,8	Calculation factor
-------	------	--------------------