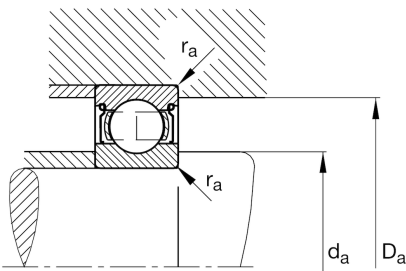
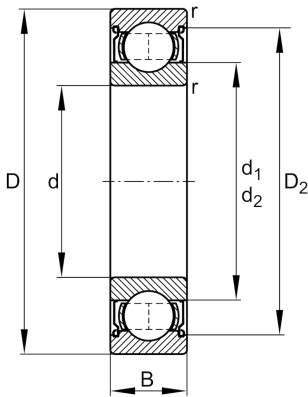


**FAG****6024-2Z**

Deep groove ball bearing

Schaeffler ID:
0167184960000Deep groove ball bearing 60...-2Z, single
row, shields, steel sheet metal cage

Technical information

**Main Dimensions & Performance Data**

d	120,00 mm	Bore diameter
D	180,00 mm	Outside diameter
B	28,00 mm	Width
C_r	88.000,00 N	Basic dynamic load rating, radial
C_{0r}	77.000,00 N	Basic static load rating, radial
C_{ur}	3.650,00 N	Fatigue load limit, radial
n_G	4.250,00 1/min	Limiting speed
n_{gr}	4.450,00 1/min	Reference speed
	2,16 kg	Weight

Mounting dimensions

$d_{a \min}$	128,80 mm	Minimum diameter shaft shoulder
$D_{a \max}$	171,20 mm	Maximum diameter of housing shoulder
$r_{a \max}$	2,00 mm	Maximum fillet radius

Dimensions

r_{\min}	2,00 mm	Minimum chamfer dimension
D_2	165,40 mm	Caliber diameter outer ring
d_1	139,40 mm	Shoulder diameter inner ring

Temperature range

T_{\min}	-20,00 °C	Operating temperature min.
T_{\max}	120,00 °C	Operating temperature max.

Calculation factors

f_0	15,80	Calculation factor
-------	-------	--------------------