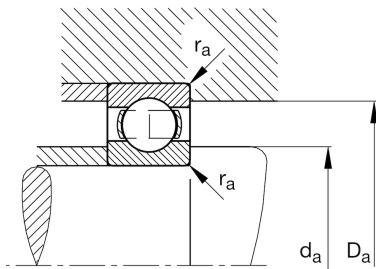
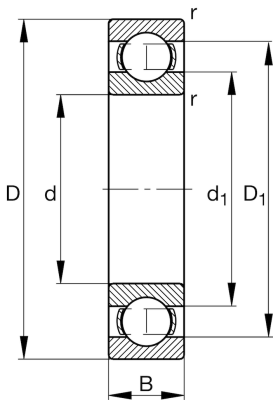


**FAG****6008-C3**

Deep groove ball bearing

Schaeffler ID:  
0167175110030Deep groove ball bearing 60, single row,  
steel sheet metal cage

## Technical information

**Main Dimensions & Performance Data**

d	40 mm	Bore diameter
D	68 mm	Outside diameter
B	15 mm	Width
$C_r$	17.800 N	Basic dynamic load rating, radial
$C_{0r}$	11.500 N	Basic static load rating, radial
$C_{ur}$	600 N	Fatigue load limit, radial
$n_G$	14.600 1/min	Limiting speed
$n_{gr}$	10.600 1/min	Reference speed
	0,181 kg	{Weight}

**Mounting dimensions**

$d_{a \min}$	44,6 mm	Minimum diameter shaft shoulder
$D_{a \max}$	63,4 mm	Maximum diameter of housing shoulder
$r_{a \max}$	1 mm	Maximum fillet radius

**Dimensions**

$r_{\min}$	1 mm	Minimum chamfer dimension
$D_1$	59,06 mm	Shoulder diameter outer ring
$d_1$	49,3 mm	Shoulder diameter inner ring

**Temperature range**

$T_{\min}$	-30 °C	Operating temperature min.
$T_{\max}$	120 °C	Operating temperature max.

**Calculation factors**

$f_0$	15,2	Calculation factor
-------	------	--------------------