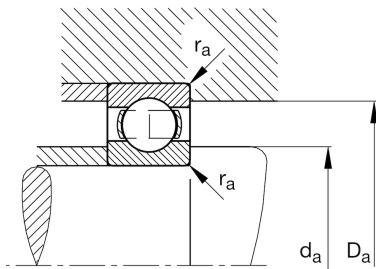
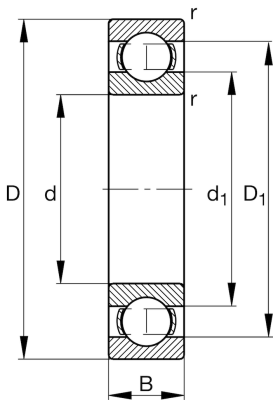


**FAG****6006**

Deep groove ball bearing

Schaeffler ID:
0167173410000Deep groove ball bearing 60, single row,
steel sheet metal cage

Technical information

**Main Dimensions & Performance Data**

d	30,00 mm	Bore diameter
D	55,00 mm	Outside diameter
B	13,00 mm	Width
C_r	13.500,00 N	Basic dynamic load rating, radial
C_{0r}	8.000,00 N	Basic static load rating, radial
C_{ur}	405,00 N	Fatigue load limit, radial
n_G	18.500,00 1/min	Limiting speed
n_{gr}	13.100,00 1/min	Reference speed
	0,11 kg	Weight

Mounting dimensions

$d_{a \min}$	34,60 mm	Minimum diameter shaft shoulder
$D_{a \max}$	50,40 mm	Maximum diameter of housing shoulder
$r_{a \max}$	1,00 mm	Maximum fillet radius

Dimensions

r_{\min}	1,00 mm	Minimum chamfer dimension
D_1	47,20 mm	Shoulder diameter outer ring
d_1	38,30 mm	Shoulder diameter inner ring

Temperature range

T_{\min}	-30,00 °C	Operating temperature min.
T_{\max}	120,00 °C	Operating temperature max.

Calculation factors

f_0	14,80	Calculation factor
-------	-------	--------------------