

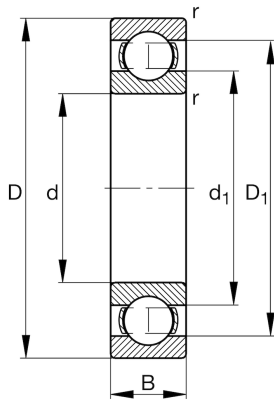
FAG★ **16009-A**

Deep groove ball bearing

Schaeffler ID:
0686821150000Deep groove ball bearing 160..-A, single
row, steel sheet metal cage

★ Preferred product

Technical information



Temperature range

T_{\min}	-30 °C	Operating temperature min.
T_{\max}	120 °C	Operating temperature max.
	0,16 kg	Weight

Main Dimensions & Performance Data

d	45 mm	Bore diameter
D	75 mm	Outside diameter
B	10 mm	Width
C_r	15.540 N	Basic dynamic load rating, radial
C_{0r}	12.250 N	Basic static load rating, radial
C_{ur}	720 N	Fatigue load limit, radial
n_G	13.100 1/min	Limiting speed
n_{gr}	6.900 1/min	Reference speed

Dimensions

r_{\min}	0,6 mm	Minimum chamfer dimension
D_1	67 mm	Shoulder diameter outer ring
d_1	57 mm	Shoulder diameter inner ring

Mounting dimensions

$d_{a\min}$	48,2 mm	Minimum diameter shaft shoulder
$D_{a\max}$	71,8 mm	Maximum diameter of housing shoulder
$r_{a\max}$	0,6 mm	Maximum fillet radius

Calculation factors

f_0	16	Calculation factor
-------	----	--------------------