

FAG

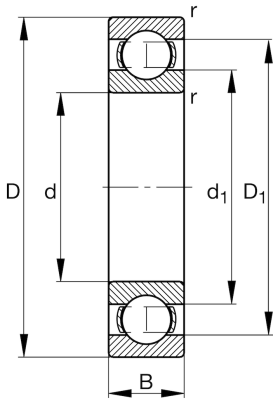
## ★ 16008-A

Deep groove ball bearing

Schaeffler ID:  
0686820690000Deep groove ball bearing 160..-A, single  
row, steel sheet metal cage

★ Preferred product

## Technical information



## Temperature range

$T_{\min}$	-30 °C	Operating temperature min.
$T_{\max}$	120 °C	Operating temperature max.
	0,127 kg	Weight

## Main Dimensions &amp; Performance Data

d	40 mm	Bore diameter
D	68 mm	Outside diameter
B	9 mm	Width
$C_r$	12.620 N	Basic dynamic load rating, radial
$C_{0r}$	9.650 N	Basic static load rating, radial
$C_{ur}$	570 N	Fatigue load limit, radial
$n_G$	15.200 1/min	Limiting speed
$n_{gr}$	7.800 1/min	Reference speed

## Dimensions

$r_{\min}$	0,3 mm	Minimum chamfer dimension
$D_1$	58,4 mm	Shoulder diameter outer ring
$d_1$	49,7 mm	Shoulder diameter inner ring

## Mounting dimensions

$d_{a\min}$	42 mm	Minimum diameter shaft shoulder
$D_{a\max}$	66 mm	Maximum diameter of housing shoulder
$r_{a\max}$	0,3 mm	Maximum fillet radius

## Calculation factors

$f_0$	16	Calculation factor
-------	----	--------------------