

FAG

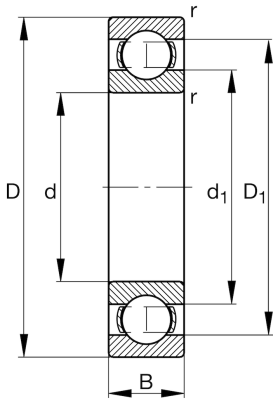
★ 16007-A

Deep groove ball bearing

Schaeffler ID:
0389043900000Deep groove ball bearing 160..-A, single
row, steel sheet metal cage

★ Preferred product

Technical information



Temperature range

T_{\min}	-30 °C	Operating temperature min.
T_{\max}	120 °C	Operating temperature max.
	0,111 kg	Weight

Main Dimensions & Performance Data

d	35 mm	Bore diameter
D	62 mm	Outside diameter
B	9 mm	Width
C_r	12.260 N	Basic dynamic load rating, radial
C_{0r}	8.800 N	Basic static load rating, radial
C_{ur}	540 N	Fatigue load limit, radial
n_G	16.700 1/min	Limiting speed
n_{gr}	8.900 1/min	Reference speed

Dimensions

r_{\min}	0,3 mm	Minimum chamfer dimension
D_1	52,7 mm	Shoulder diameter outer ring
d_1	44,3 mm	Shoulder diameter inner ring

Mounting dimensions

$d_{a\min}$	37 mm	Minimum diameter shaft shoulder
$D_{a\max}$	60 mm	Maximum diameter of housing shoulder
$r_{a\max}$	0,3 mm	Maximum fillet radius

Calculation factors

f_0	15,6	Calculation factor
-------	------	--------------------