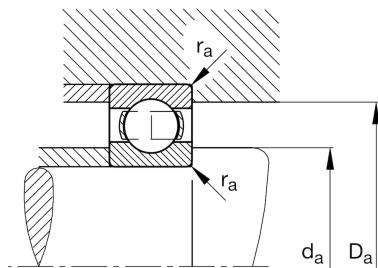
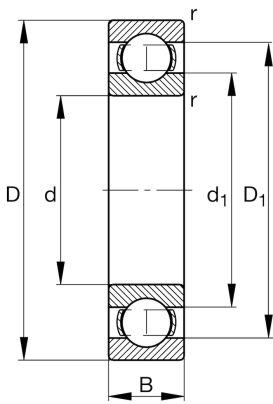


**FAG****6213-J20AB-C3** [↗](#)

Deep groove ball bearing

Deep groove ball bearing 62...J20AB, single row, steel sheet metal cage, ceramic coated

Technical information

**Main Dimensions & Performance Data**

d	65 mm	Bore diameter
D	120 mm	Outside diameter
B	23 mm	Width
C_r	63.000 N	Basic dynamic load rating, radial
C_{0r}	41.500 N	Basic static load rating, radial
C_{ur}	2.850 N	Fatigue load limit, radial
n_G	8.600 1/min	Limiting speed
n_{gr}	6.300 1/min	Reference speed
$\approx m$	0,979 kg	Weight

Mounting dimensions

$d_{a \min}$	74 mm	Minimum diameter shaft shoulder
$D_{a \max}$	111 mm	Maximum diameter of housing shoulder
$r_{a \max}$	1,5 mm	Maximum fillet radius

Dimensions

r_{\min}	1,5 mm	Minimum chamfer dimension
D_1	103,6 mm	Shoulder diameter outer ring
d_1	82,32 mm	Shoulder diameter inner ring

Temperature range

T_{\min}	-30 °C	Operating temperature min.
T_{\max}	150 °C	Operating temperature max.

Calculation factors

f_0	14,4	Calculation factor
-------	------	--------------------