



**FAG**

### SES508-607-L

Plummer block housing

Split plummer block housing for various bearing designs. The SNV series will be replaced by the new SES series in 2022.

## Technical information

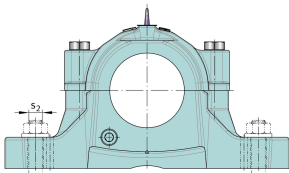
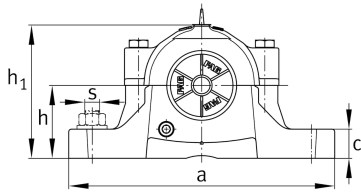


### Main Dimensions & Performance Data

D	80 mm	Outside diameter bearing
a	205 mm	Length base
h <sub>1</sub>	108 mm	Height
g	85 mm	Width housing body
K	39 mm	Width bearing seat
≈m	3,02 kg	Weight



### Dimensions



b	60 mm	Width base
c	25 mm	Height base
h	60 mm	Base to shaft centerline height
m	170 mm	Distance fixing bore
s	12,7 mm	Screw size
s	M12	Size of fixing screws
u	15 mm	Width slot
v	20 mm	Length slot
D <sub>2</sub>	51,5 mm	Diameter sealing
D <sub>3</sub>	59,5 mm	Diameter sealing groove
D <sub>5</sub>	57,7 mm	Outside diameter sealing labyrinth
g <sub>1</sub>	5 mm	Width sealing groove
g <sub>2</sub>	69 mm	Distance sealing
g <sub>3</sub>	11 mm	Wall thickness
g <sub>4</sub>	28 mm	Distance oil lubrication
m <sub>1</sub>	137 mm	Distance holes aligned pins m1
n <sub>3</sub>	52 mm	Distance lubrication
n <sub>4</sub>	71 mm	Distance lubrication sealing
u <sub>1</sub>	4 mm	Bore diameter u1
u <sub>2</sub>	11 mm	Bore diameter u2