

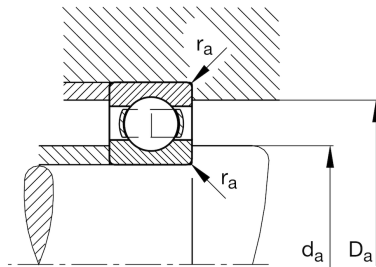
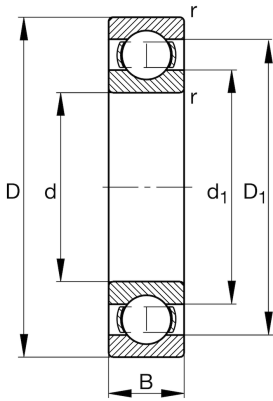
FAG

**6416-M-C3**

Deep groove ball bearing

Schaeffler ID:  
0191127180030Deep groove ball bearing 64..-M, single  
row, solid brass cage

## Technical information

**Main Dimensions & Performance Data**

d	80 mm	Bore diameter
D	200 mm	Outside diameter
B	48 mm	Width
$C_r$	173.000 N	Basic dynamic load rating, radial
$C_{0r}$	125.000 N	Basic static load rating, radial
$C_{ur}$	7.100 N	Fatigue load limit, radial
$n_G$	5.900 1/min	Limiting speed
$n_{gr}$	5.400 1/min	Reference speed
$\approx m$	8,29 kg	Weight

**Mounting dimensions**

$d_{a \min}$	96 mm	Minimum diameter shaft shoulder
$D_{a \max}$	184 mm	Maximum diameter of housing shoulder
$r_{a \max}$	2,5 mm	Maximum fillet radius

**Dimensions**

$r_{\min}$	3 mm	Minimum chamfer dimension
$D_1$	162,14 mm	Shoulder diameter outer ring
$d_1$	117,94 mm	Shoulder diameter inner ring

**Temperature range**

$T_{\min}$	-30 °C	Operating temperature min.
$T_{\max}$	150 °C	Operating temperature max.

**Calculation factors**

$f_0$	12,3	Calculation factor
-------	------	--------------------