



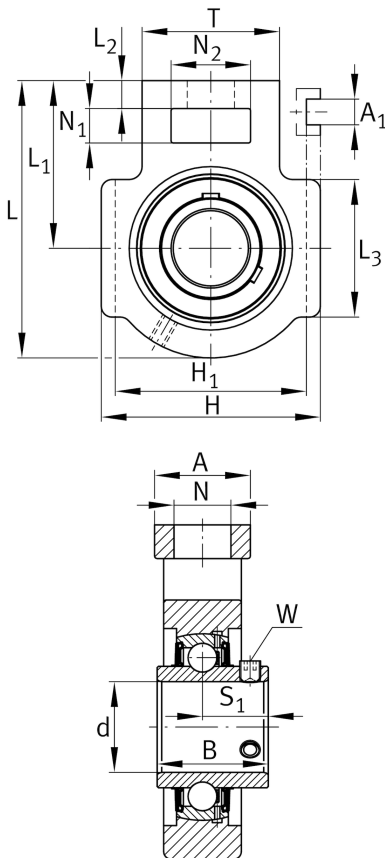
FAG

UCT213

Take-up housing unit

Schaeffler ID:
0822524080000Housing units UCT, cast iron housing,
radial insert ball bearing with grub screws
in inner ring, RSR seals, for linear motion

Technical information



Main Dimensions & Performance Data

d	65 mm	Bore diameter
H	167 mm	Height
L	224 mm	Length total
≈m	6,61 kg	Weight

Mounting dimensions

A ₁	26 mm	Width guidance groove
	0,3 mm	Upper width guidance groove tolerance
	0 mm	Lower width guidance groove tolerance
H ₁	151 mm	Distance guidance grooves
	0 mm	Upper distance guidance groove tolerance
	-0,8 mm	Lower distance guidance groove tolerance
N	41 mm	Fixing bore

Dimensions

L ₁	137 mm	Distance shaft axis
L ₂	21 mm	Length fixed link
L ₃	121 mm	Length guidance groove
A	70 mm	Width housing fixing side
N ₁	32 mm	Width recess
N ₂	70 mm	Height recess
B	65,1 mm	Width inner ring
S ₁	39,7 mm	Distance of raceway to locking collar
T	111 mm	Height housing fixing side
Q	M6	Connection thread for lubrication
A ₂	44 mm	Width housing

Additional information

T213	Housing
UC213	Bearing designation

Temperature range

T _{min}	-20 °C	Operating temperature min.
T _{max}	120 °C	Operating temperature max.