



FAG

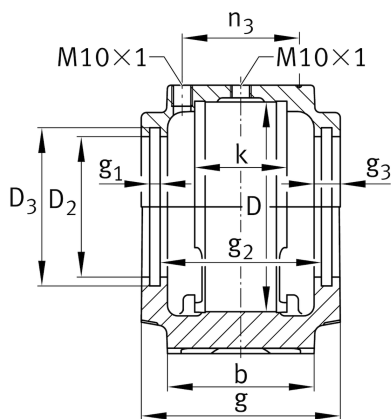
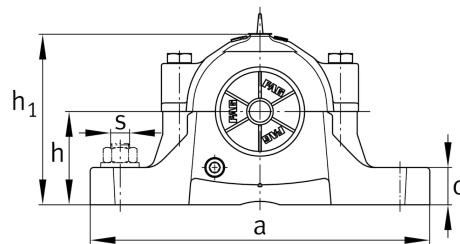
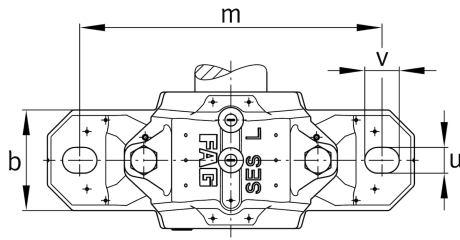
## SES528-L

Plummer block housing

Schaeffler ID:  
0860886530000

Split plummer block housing for various bearing designs. The SNV series will be replaced by the new SES series in 2022.

## Technical information



## Main Dimensions &amp; Performance Data

D	250 mm	Outside diameter bearing
a	500 mm	Length base
h <sub>1</sub>	302 mm	Height
g	205 mm	Width housing body
K	98 mm	Width bearing seat
≈m	40,6 kg	Weight

## Dimensions

b	150 mm	Width base
c	50 mm	Height base
h	150 mm	Base to shaft centerline height
m	420 mm	Distance fixing bore
s	31,75 mm	Screw size
s	M30	Size of fixing screws
u	35 mm	Width slot
v	42 mm	Length slot
D <sub>2</sub>	177,5 mm	Diameter sealing
D <sub>3</sub>	187,5 mm	Diameter sealing groove
D <sub>5</sub>	184,2 mm	Outside diameter sealing labyrinth
g <sub>1</sub>	6 mm	Width sealing groove
g <sub>2</sub>	183 mm	Distance sealing
g <sub>3</sub>	15 mm	Wall thickness
g <sub>4</sub>	40 mm	Distance oil lubrication
m <sub>1</sub>	360 mm	Distance holes aligned pins m1
n <sub>3</sub>	124 mm	Distance lubrication
n <sub>4</sub>	185 mm	Distance lubrication sealing
u <sub>1</sub>	12 mm	Bore diameter u1
u <sub>2</sub>	26 mm	Bore diameter u2

