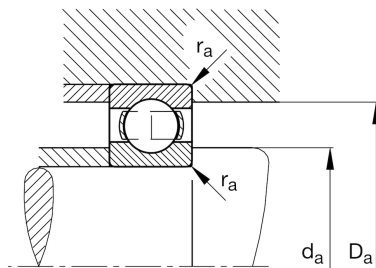
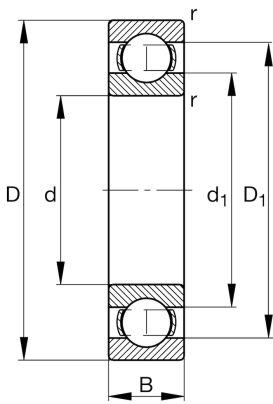


**FAG****6320-M-J20AA-C3**

Deep groove ball bearing

Deep groove ball bearing 63.-M-J20AA, single row, solid brass cage, ceramic coated

Technical information

**Main Dimensions & Performance Data**

d	100 mm	Bore diameter
D	215 mm	Outside diameter
B	47 mm	Width
C_r	177.000 N	Basic dynamic load rating, radial
C_{0r}	137.000 N	Basic static load rating, radial
C_{ur}	7.400 N	Fatigue load limit, radial
n_G	5.500 1/min	Limiting speed
n_{gr}	4.600 1/min	Reference speed
$\approx m$	8,729 kg	Weight

Mounting dimensions

$d_{a \min}$	114 mm	Minimum diameter shaft shoulder
$D_{a \max}$	201 mm	Maximum diameter of housing shoulder
$r_{a \max}$	2,5 mm	Maximum fillet radius

Dimensions

r_{\min}	3 mm	Minimum chamfer dimension
D_1	179,7 mm	Shoulder diameter outer ring
d_1	138,5 mm	Shoulder diameter inner ring

Temperature range

T_{\min}	-30 °C	Operating temperature min.
T_{\max}	150 °C	Operating temperature max.

Calculation factors

f_0	13,7	Calculation factor
-------	------	--------------------