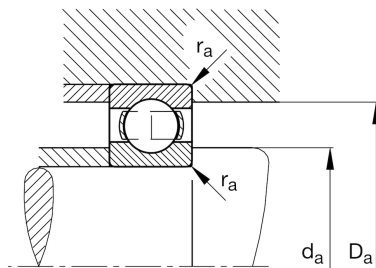
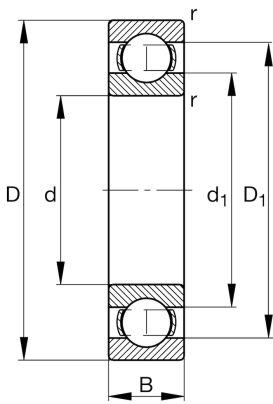


**FAG****6316-J20AB-C3** [↗](#)

Deep groove ball bearing

Deep groove ball bearing 63..J20AB, single row, steel sheet metal cage, ceramic coated

Technical information

**Main Dimensions & Performance Data**

d	80 mm	Bore diameter
D	170 mm	Outside diameter
B	39 mm	Width
C_r	131.000 N	Basic dynamic load rating, radial
C_{0r}	87.000 N	Basic static load rating, radial
C_{ur}	5.400 N	Fatigue load limit, radial
n_G	5.400 1/min	Limiting speed
n_{gr}	5.500 1/min	Reference speed
$\approx m$	3,68 kg	Weight

Mounting dimensions

$d_{a \min}$	92 mm	Minimum diameter shaft shoulder
$D_{a \max}$	158 mm	Maximum diameter of housing shoulder
$r_{a \max}$	2,1 mm	Maximum fillet radius

Dimensions

r_{\min}	2,1 mm	Minimum chamfer dimension
D_1	142,4 mm	Shoulder diameter outer ring
d_1	108,56 mm	Shoulder diameter inner ring

Temperature range

T_{\min}	-30 °C	Operating temperature min.
T_{\max}	150 °C	Operating temperature max.

Calculation factors

f_0	13,3	Calculation factor
-------	------	--------------------