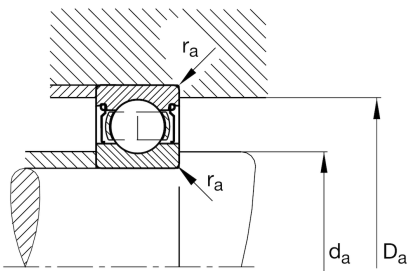
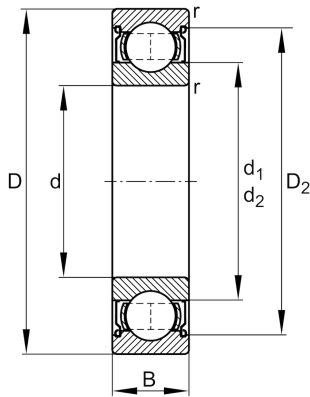


**FAG****608-2Z-HLN-C3**

Deep groove ball bearing

Schaeffler ID:
0629447970030Deep groove ball bearing 60...-2Z, single
row, shields, steel sheet metal cage

Technical information

**Main Dimensions & Performance Data**

d	8 mm	Bore diameter
D	22 mm	Outside diameter
B	7 mm	Width
C_r	3.290 N	Basic dynamic load rating, radial
C_{0r}	1.360 N	Basic static load rating, radial
C_{ur}	85 N	Fatigue load limit, radial
n_G	34.000 1/min	Limiting speed
n_{gr}	31.800 1/min	Reference speed
	0,012 kg	Weight

Mounting dimensions

$d_{a \min}$	10 mm	Minimum diameter shaft shoulder
$D_{a \max}$	20 mm	Maximum diameter of housing shoulder
$r_{a \max}$	0,3 mm	Maximum fillet radius

Dimensions

r_{\min}	0,3 mm	Minimum chamfer dimension
D_2	19,03 mm	Caliber diameter outer ring
d_2	10,5 mm	Caliber diameter inner ring

Temperature range

T_{\min}	-30 °C	Operating temperature min.
T_{\max}	120 °C	Operating temperature max.

Calculation factors

f_0	123	Calculation factor
-------	-----	--------------------