



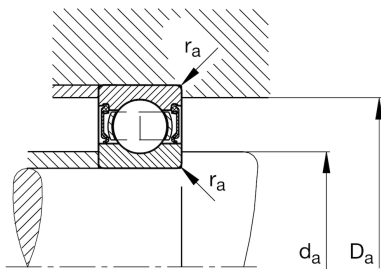
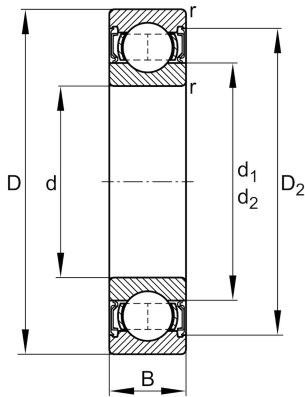
FAG

608-2RSR-HLN-C3

Deep groove ball bearing

Schaeffler ID:
0629450410030Deep groove ball bearing 60...-2RSR,
single row, seals, steel sheet metal cage

Technical information

**Main Dimensions & Performance Data**

d	8 mm	Bore diameter
D	22 mm	Outside diameter
B	7 mm	Width
C_r	3.290 N	Basic dynamic load rating, radial
C_{0r}	1.360 N	Basic static load rating, radial
C_{ur}	85 N	Fatigue load limit, radial
n_G	21.700 1/min	Limiting speed
	0,01 kg	Weight

Mounting dimensions

$d_{a \min}$	10 mm	Minimum diameter shaft shoulder
$D_{a \max}$	20 mm	Maximum diameter of housing shoulder
$r_{a \max}$	0,3 mm	Maximum fillet radius

Dimensions

r_{\min}	0,3 mm	Minimum chamfer dimension
D_1	18 mm	Shoulder diameter outer ring
d_1	11 mm	Shoulder diameter inner ring

Temperature range

T_{\min}	-30 °C	Operating temperature min.
T_{\max}	100 °C	Operating temperature max.

Calculation factors

f_0	123	Calculation factor
-------	-----	--------------------