

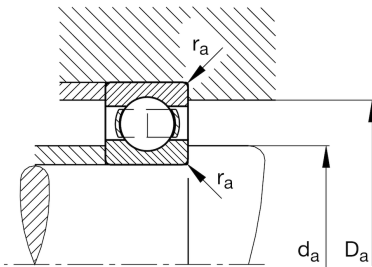
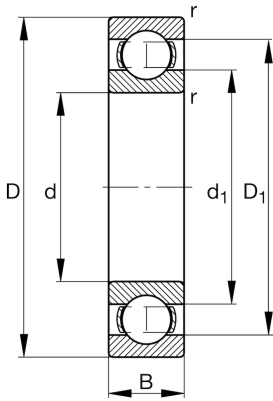
FAG

6014-M

Deep groove ball bearing

Schaeffler ID:
0190938530000Deep groove ball bearing 60..-M, single
row, solid brass cage

Technical information

**Main Dimensions & Performance Data**

d	70,00 mm	Bore diameter
D	110,00 mm	Outside diameter
B	20,00 mm	Width
C_r	40.500,00 N	Basic dynamic load rating, radial
C_{0r}	31.000,00 N	Basic static load rating, radial
C_{ur}	1.900,00 N	Fatigue load limit, radial
n_G	11.200,00 1/min	Limiting speed
n_{gr}	6.800,00 1/min	Reference speed
	0,71 kg	Weight

Mounting dimensions

$d_{a \min}$	76,00 mm	Minimum diameter shaft shoulder
$D_{a \max}$	104,00 mm	Maximum diameter of housing shoulder
$r_{a \max}$	1,00 mm	Maximum fillet radius

Dimensions

r_{\min}	1,10 mm	Minimum chamfer dimension
D_1	97,30 mm	Shoulder diameter outer ring
d_1	82,80 mm	Shoulder diameter inner ring

Temperature range

T_{\min}	-30,00 °C	Operating temperature min.
T_{\max}	150,00 °C	Operating temperature max.

Calculation factors

f_0	15,60	Calculation factor
-------	-------	--------------------