



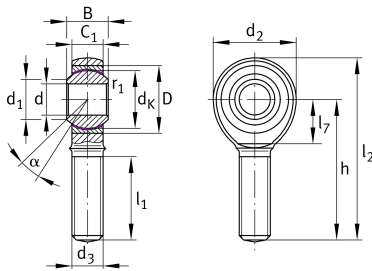
GAKL30-PW

Rod end

Schaeffler ID:
0066309520000

Rod end GAKL...-PW, external threads,
maintenance-free

Technical information



Main Dimensions & Performance Data

d	30 mm	Bore diameter bearing
d ₂	70 mm	Outer eye diameter
D	55 mm	Outside diameter bearing
l ₂	145 mm	Total length external thread rod
B	37 mm	Width inner ring
C _r	114.000 N	Basic dynamic load rating, radial
C _{0r}	95.900 N	Basic static load rating, radial
	1,1 kg	Weight

Mounting dimensions

r _{1smin}	0,3 mm	Edge Spacing
--------------------	--------	--------------

Dimensions

d _K	50,8 mm	Ball diameter
d ₁	34,8 mm	Outer flange diameter inner ring
d ₃	M30x2	Thread size
h	110 mm	Shank Length External thread rod
C ₁	25 mm	Width of the rod end
α	17 °	Tilt angle
l ₁	66 mm	Thread length external thread
l ₇	37 mm	Distance drilling with/shaft start
G _r	0 - 0,035 mm	Radial Clearance
d _T	H7 mm	Bore diameter bearing, tolerance
d _{OT}	0,021 mm	Bore diameter bearing, upper tolerance
d _{UT}	0 mm	Bore diameter bearing, lower tolerance
B _{OT}	0 mm	Width inner ring, upper tolerance
B _{UT}	-0,12 mm	Width inner ring, lower tolerance

Temperature range

T _{min}	-50 °C	Operating temperature min.
T _{max}	200 °C	Operating temperature max.