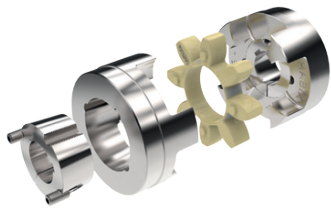


# DESCH Delivery Programme



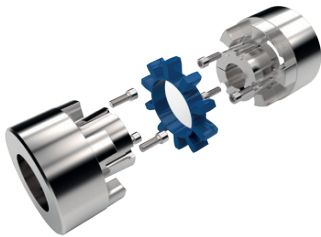
## Couplings



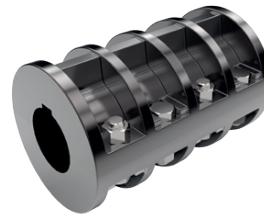
Habix® couplings  
type HWN,  
type HWT with  
taper bushes



DESCH Pex couplings



Hadeflex® couplings  
type X and TX



Clamp couplings DIN 115



DESCH HRC couplings



Flange couplings DIN 116



Hadeflex® couplings  
type F



Clamp couplings  
steel/stainless steel  
one-piece/two-piece design



DESCH Flex couplings



Mini couplings



Orpex® couplings



Conax® friction clutches



GC gear couplings



Planox® friction clutches

## Belt Drives



V-Belt pulleys  
with taper bushes



Timing belt pulleys



Taper bushes

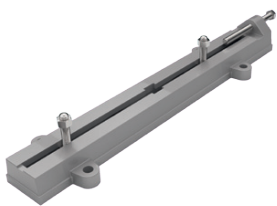


V-Belts  
Timing belts

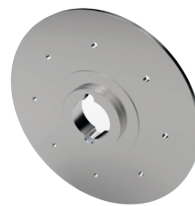


Special pulleys

## Transmission Components



Motor slides made of cast iron  
EN-GJL-200



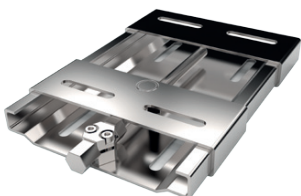
Bolt-on hubs  
for taper bushes



Motor slides  
made of steel



Weld-on hubs  
for taper bushes

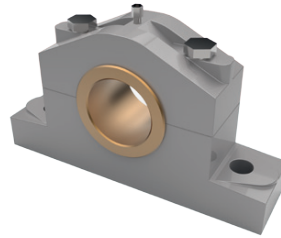


Motor mounts

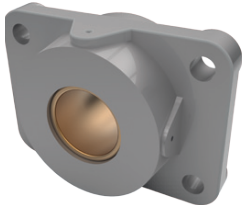
## Bearings



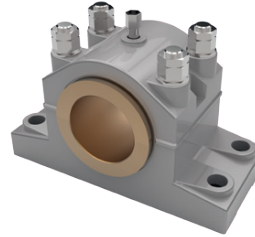
Flange bearings acc. to DIN 502  
with or without bronze bush



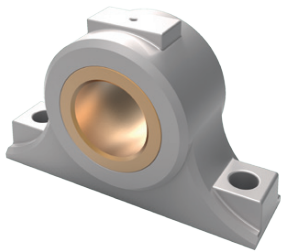
Cap bearings acc. to DIN 505 L  
with bronze shell



Flange bearings acc. to DIN 503  
with or without bronze bush



Cap bearings acc. to DIN 506  
with bronze shell



Eye bearings acc. to DIN 504  
with or without bronze bush

## DESCH Power Transmission

- > Service center for industrial applications in the fields of driving, controlling, moving
- > your partner in Germany and abroad
  - for technical distributors ■ for OEM's ■ for end users
- > calculates and optimizes complete drive systems
- > offers excellent service and logistics

Further information to download is provided on our homepage

[www.desch.de](http://www.desch.de)



## DESCH logistics centre

DESCH has thousands of products ready to supply just in time – with over-night delivery, if necessary. Anything is possible with the new service centre. This state-of-the-art facility enables us to pick and place several hundred items a day and send them to destinations across the globe.

Products vary greatly in weight - from five grams up to five tons. The new high-bay warehouse and computer-assisted small-parts warehouse play a key role in helping to meet customer requirements.

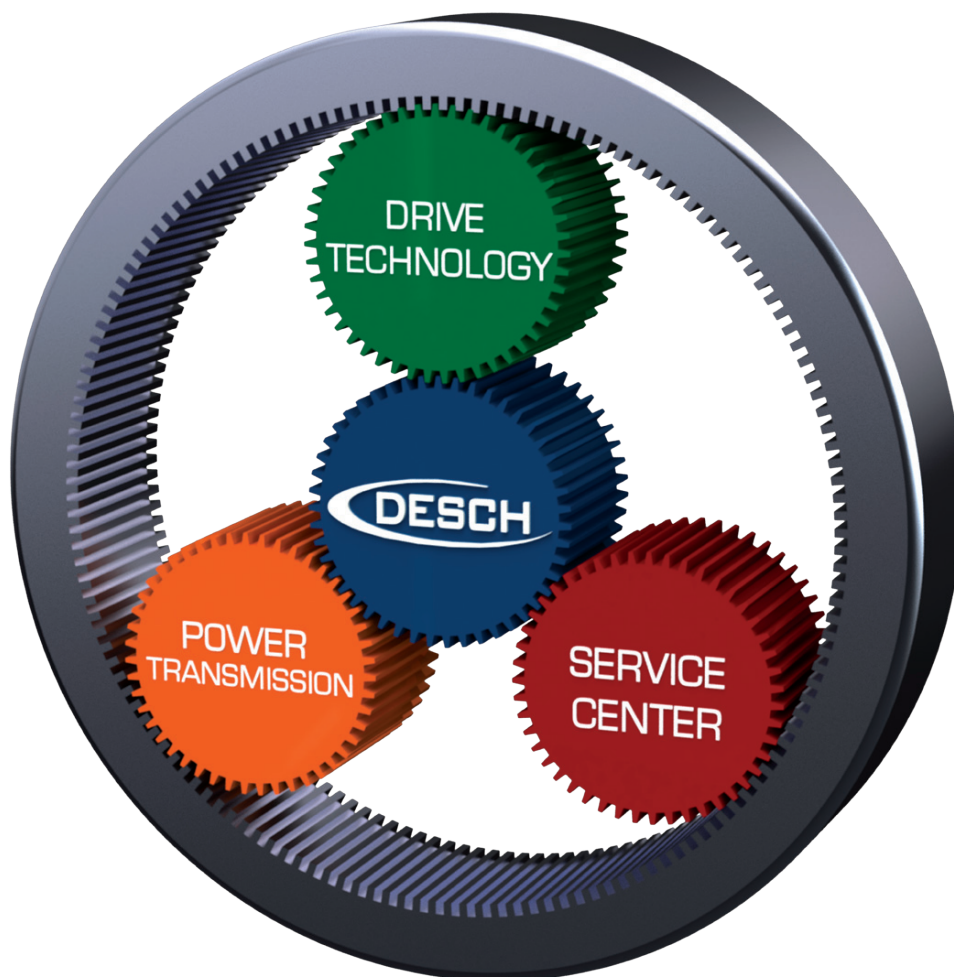


You can view our stock or place orders directly in our online shop.

**[dpc.desch.de](https://dpc.desch.de)**

The product range can also be found on our website [www.desch.de](https://www.desch.de).

Take a look – we're open 24/7!



**DESCH** Antriebstechnik GmbH & Co. KG

Postbox 14 40 | 59753 Arnsberg/Germany  
Kleinbahnstraße 21 | 59759 Arnsberg/Germany  
T +49 2932 300 0 | F +49 2932 300 899  
I [www.desch.de](http://www.desch.de) | E [info@desch.de](mailto:info@desch.de)

**DESCH** DPC  
GmbH & Co. KG  
Postbox 14 40  
59753 Arnsberg/Germany  
Kleinbahnstraße 21  
59759 Arnsberg/Germany  
T +49 2932 300 0  
F +49 2932 300 830  
I [www.desch.de](http://www.desch.de)  
E [info@desch.de](mailto:info@desch.de)

**DESCH** Canada Ltd.  
240 Shearson Crescent  
Cambridge,  
Ontario  
Canada N 1T 1J6  
T +1800 2631866  
+1519 6214560  
F +1519 6231169  
I [www.desch.de](http://www.desch.de)  
E [desch@desch.on.ca](mailto:desch@desch.on.ca)

**DESCH** Italien  
Drive Technology  
Ufficio di rappresentanza  
in Italia  
Via Cavriana, 3  
20134 Milano/Italy  
T +3902 7391280  
F +3902 7391281  
I [www.desch.de](http://www.desch.de)  
E [desch.italia@desch.de](mailto:desch.italia@desch.de)

**DESCH** China  
Machinery (Shanghai) Ltd.  
No. 10 Building,  
No. 2317 Shengang Road,  
Songjiang District  
201612 Shanghai/China  
T +86 21 5771 8058 818  
F +86 21 5765 5155  
I [www.desch.de](http://www.desch.de)  
E [desch.china@desch.de](mailto:desch.china@desch.de)

**DESCH** do Brasil  
Power Transmission S.A.  
Rdv Edgar Máximo  
Zambotto, s/n km 54  
Campo Limpo Paulista - SP,  
CEP: 13.231-700  
T +55 11 4039 8240  
F +55 11 4039 8222  
I [www.desch.de](http://www.desch.de)  
E [desch.brasilien@desch.de](mailto:desch.brasilien@desch.de)